

**CORRECTIVE SERVICES**

AUSTRALIA

EMBARGO: 11.30AM (CANBERRA TIME) THURS 21 JUN 2007

C O N T E N T S

	<i>page</i>
Notes	2
Summary of findings	3

TABLES

1 Persons in corrective services, quarterly comparisons	8
2 Persons in full-time custody	10
3 Imprisonment rates	11
4 Persons in full-time custody, by sex	12
5 Imprisonment rates, by sex	13
6 Indigenous persons in full-time custody, by sex	14
7 Indigenous imprisonment rates, by sex	15
8 Persons in full-time custody, by type of custody	16
9 Imprisonment rates, by type of custody	17
10 Persons in full-time custody, by legal status	18
11 Imprisonment rates, by legal status	19
12 Indigenous persons in full-time custody, by legal status	20
13 Indigenous imprisonment rates, by legal status	21
14 Sentenced prisoner receptions into full-time custody	22
15 Persons in periodic detention, by sex	23
16 Federal sentenced persons in full-time custody, by sex	24
17 Persons in community-based corrections, by sex	25
18 Community-based corrections rates, by sex	26
19 Persons in community-based corrections, by type of order	27

ADDITIONAL INFORMATION

Explanatory Notes	29
Appendix Experimental Community-Based Corrections Data	35
Glossary	39

I N Q U I R I E S

For further information about these and related statistics, contact the National Information and Referral Service on 1300 135 070 or Terence Byrnes on Melbourne (03) 9615 7681.

NOTES

FORTHCOMING ISSUES

ISSUE (Quarter)

RELEASE DATE

June 2007

20 September 2007



ABOUT THIS PUBLICATION

This publication presents information on persons in custody and community-based corrections. The statistics are derived from information provided to the Australian Bureau of Statistics (ABS) from administrative records held by corrective services agencies in each state and territory, and from the Australian Government Attorney-General's Department for details on federal prisoners. Details are provided for each state and territory on: prisoner numbers and imprisonment rates by type of custody (i.e. open or secure custody or periodic detention); prisoner numbers by legal status (sentenced or unsentenced) for all prisoners and for Indigenous prisoners; the number of sentenced receptions into custody; the number of federal prisoners; and the numbers and rates of persons serving community-based corrections orders. Experimental data on the Indigenous status of persons in community-based corrections are also included in the Appendix.

The ABS acknowledges the valuable contribution of the Board of Management and the Advisory Group of the National Corrective Services Statistics Unit as well as the staff of the various agencies that provide the statistics that are presented in this publication.

FURTHER INFORMATION

More information about ABS activities in the field of crime and justice statistics is available from the Crime and Justice theme page on the ABS website <www.abs.gov.au>. Details of other ABS publications relating to Crime and Justice statistics can be found in paragraphs 42–43 of the Explanatory Notes.



ABBREVIATIONS

- ABS Australian Bureau of Statistics
- ACT Australian Capital Territory
- Aust. Australia
- ERP estimated resident population
- NCCJS National Centre for Crime and Justice Statistics, Australian Bureau of Statistics
- NSW New South Wales
- NT Northern Territory
- Qld Queensland
- SA South Australia
- Tas. Tasmania
- Vic. Victoria
- WA Western Australia

Brian Pink
Australian Statistician

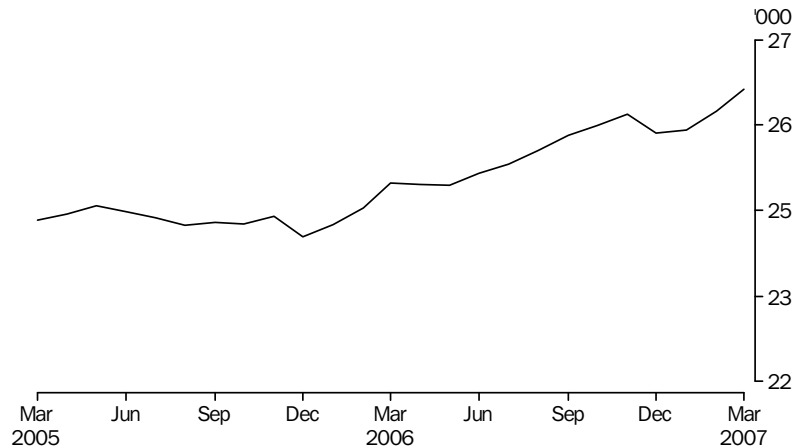
SUMMARY OF FINDINGS

PERSONS IN CORRECTIVE SERVICES

Based on first day of the month averages, for the March quarter 2007 there were 77,481 persons under the authority of corrective services (excluding those in periodic detention). The total comprised 25,801 persons in full-time custody and 51,680 persons in community-based corrections. This represents an increase of less than 1% (712 persons) from the March quarter 2006. From the March quarter 2006, persons in full-time custody increased by 6% (1,404 persons) and persons in community-based corrections decreased by 1% (692 persons).

PERSONS IN CUSTODY Number of prisoners

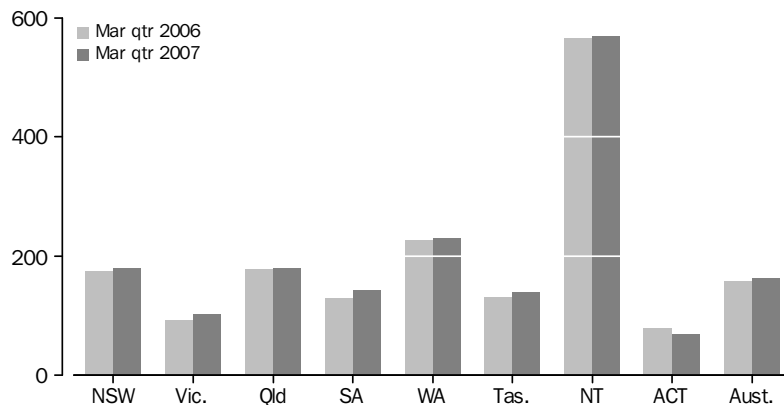
PERSONS IN PRISON CUSTODY, Average daily number per month



The average daily number of full-time prisoners in Australia in the March quarter 2007 was 25,968. There was an increase of 1% on the December quarter 2006 and an increase of 6% on the March quarter 2006.

Rates per 100,000 adults

AVERAGE DAILY IMPRISONMENT RATE (a), By State and Territory



(a) Rate per 100,000 adult population.

Nationally, the March quarter 2007 average daily imprisonment rate was 163 prisoners per 100,000 adult population, an increase of 4% from the March quarter 2006 (157 prisoners). The Northern Territory had the highest imprisonment rate (570 prisoners per 100,000 adult population), followed by Western Australia (230) and Queensland (180).

The Australian Capital Territory (including Australian Capital Territory prisoners held in New South Wales prisons) and Victoria had the lowest imprisonment rates (70 and 103 prisoners per 100,000 adults respectively).

SUMMARY OF FINDINGS *continued*

*Rates per 100,000 adults
continued*

The largest proportional increase in imprisonment rates from the March quarter 2006 was recorded in Victoria (11%). The largest proportional decrease over the same period was recorded in the Australian Capital Territory (including Australian Capital Territory prisoners held in New South Wales prisons) (12%).

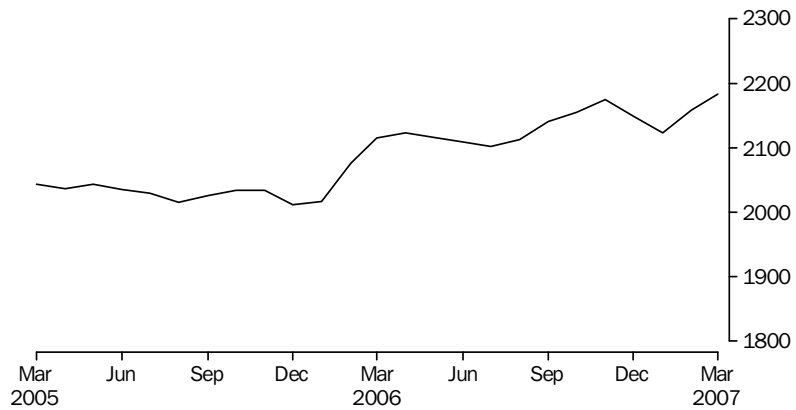
Sex

Of the average daily number of full-time prisoners in Australia in the March quarter 2007, 24,117 (93%) were male and 1,851 (7%) were female. The average daily imprisonment rate for males was 308 prisoners per 100,000 adult male population, while for females it was 23 prisoners per 100,000 adult female population. Males were more than 13 times more likely to be in prison than females.

Indigenous Prisoners

The average daily number of full-time Indigenous adult prisoners in Australia in the March quarter 2007 was 6,333, comprising 5,771 (91%) males and 562 (9%) females. Almost 80% of the total Indigenous prisoner population was located in New South Wales (1,961), Queensland (1,532) and Western Australia (1,511).

AVERAGE DAILY INDIGENOUS IMPRISONMENT RATE (a), Per month



(a) Rate per 100,000 adult Indigenous population.

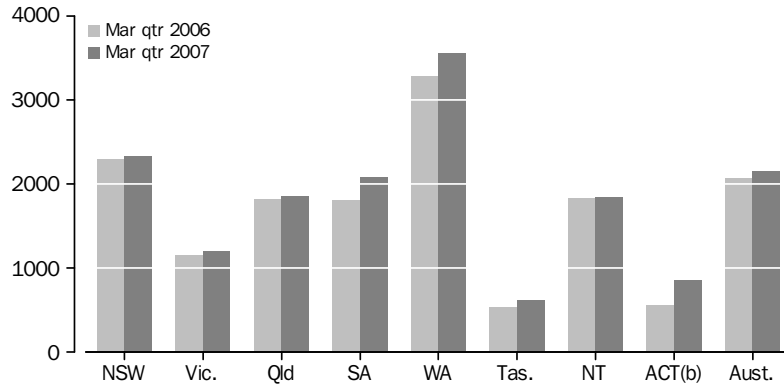
The national average daily Indigenous imprisonment rate in the March quarter 2007 was 2,155 per 100,000 adult Indigenous population, an increase of 4% from the March quarter 2006 and a decrease of less than 1% from the previous quarter.

The highest Indigenous imprisonment rate was recorded in Western Australia (3,554 Indigenous prisoners per 100,000 adult Indigenous population), followed by New South Wales (2,334).

SUMMARY OF FINDINGS *continued*

Indigenous Prisoners *continued*

AVERAGE DAILY INDIGENOUS IMPRISONMENT RATE(a), By State and Territory



(a) Rate per 100,000 adult Indigenous population.

(b) Apparent variations in ACT rates may be as a result of small counts, see tables 6 and 7.

The largest proportional increase in the Indigenous imprisonment rate from the March quarter 2006 was recorded in the South Australia (16%). (There was a large apparent increase in the Indigenous imprisonment rate in the Australian Capital Territory, but this was largely as a result of improvements to the identification of Indigenous persons who were previously classified to an unknown status).

Different age profiles of the Indigenous and non-Indigenous population can affect the imprisonment rate numbers. The quarterly collection is unable to take age into account, however, data from the Prisoner Census collection can provide this level of detail.

The national age standardised Indigenous imprisonment rate from the annual Prisoner Census conducted at June 2006 was 13 times higher (1,668 per 100,000 adult Indigenous population) than the rate for non-Indigenous persons (130 per 100,000 adult non-Indigenous population). Further information on the comparison of imprisonment rates between Indigenous and non-Indigenous populations can be found in *Prisoners in Australia 2006 (cat.no.4517.0)*.

Type of full-time custody

The average daily number of prisoners in secure prison custody in the March quarter 2007 was 19,850 (76% of prisoners in full-time custody). Open prison custody comprised 6,118 (24%) prisoners.

In the March quarter 2007, all prisoners held in full-time custody in the Australian Capital Territory were in secure custody. Of the other states and territories, Victoria, South Australia and Tasmania had the highest proportion of prisoners in secure custody (91%, 89% and 89% respectively). New South Wales (including Australian Capital Territory prisoners held in New South Wales prisons) had the lowest proportion of prisoners in secure full-time custody (62%).

Legal status

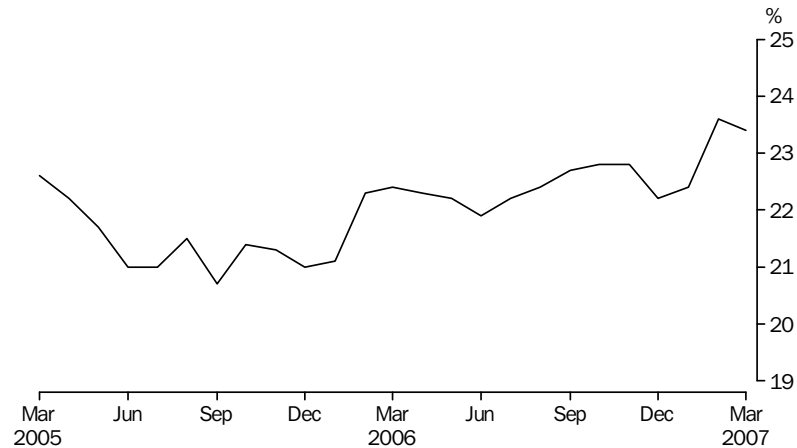
The average number of prisoners in full-time custody on the first day of each month in the March quarter 2007 was 25,801, comprising an average of 19,830 (77%) sentenced and 5,971 (23%) unsentenced prisoners. The Australian Capital Territory (including Australian Capital Territory prisoners held in New South Wales prisons) and South Australia had the highest proportions of unsentenced prisoners (37% and 35%

SUMMARY OF FINDINGS *continued*

Legal status continued

respectively). The lowest proportions of unsentenced prisoners were recorded in Victoria and Western Australia (both 19%).

UNSENTENCED PERSONS IN PRISON CUSTODY, Proportion per month



Sentenced Prisoner Receptions

There were 6,403 sentenced prisoner receptions into full-time custody in Australia in the March quarter 2007. The number of sentenced receptions increased by 64 (1%) from the December quarter 2006, and increased by 472 (8%) from the March quarter 2006.

Periodic detention

Periodic detention is a form of custody or order where a sentenced prisoner is required to be held in custody on a part-time basis. This type of custody order is only used in New South Wales and the Australian Capital Territory. During the March quarter 2007 there was an average daily number of 743 persons in New South Wales and 53 persons in the Australian Capital Territory held in periodic detention. The rate of imprisonment for periodic detainees decreased by 1% in New South Wales, and increased by 2% in the Australian Capital Territory from the December quarter 2006 to the March quarter 2007.

Federal prisoners

In the March quarter 2007, there were 645 federal prisoners in Australia, a decrease of 11 (2%) from the March quarter 2006. More than half (388) of these federal prisoners were sentenced in New South Wales.

PERSONS IN COMMUNITY-BASED CORRECTIONS

Community-based corrections orders are non-custodial orders under the authority of corrective services and include restricted movement, fine option, community service, parole, bail, and sentenced probation. Unless otherwise specified figures are based on first day of the month. In the March quarter 2007, there were 51,680 persons in community-based corrections in Australia, a decrease of less than 1% (10 persons) from the December quarter 2006 and a decrease of 1% (692 persons) from the March quarter 2006.

Sex

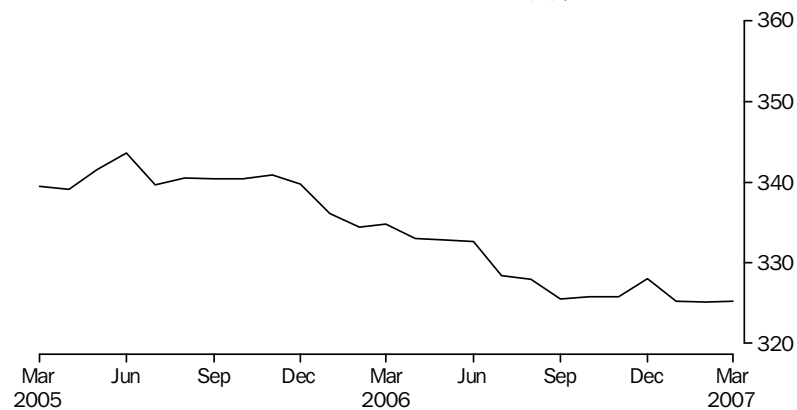
Of the average number of persons in community-based corrections in Australia in the March quarter 2007, 42,146 (82%) were male and 9,436 (18%) were female.

SUMMARY OF FINDINGS *continued*

Rates per 100,000 adults

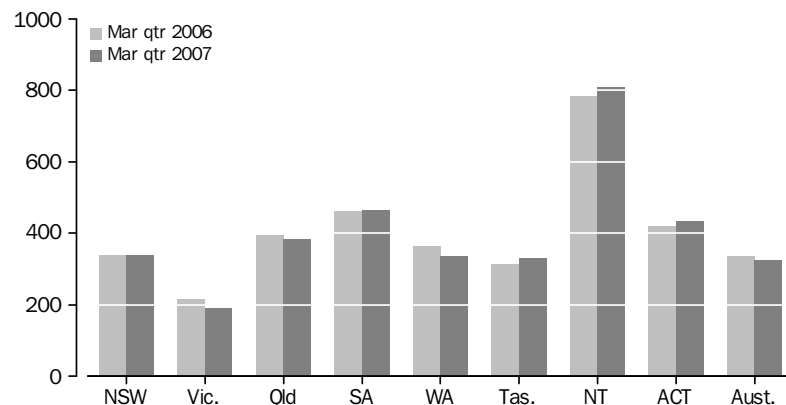
Nationally, the rate of persons in community-based corrections was 325 persons per 100,000 adult population for the March quarter 2007. This was a decrease of 3% from the March quarter 2006 (335 persons per 100,000 adults). The largest percentage increase from the March quarter 2006 was recorded in Tasmania (6%). The largest decreases were recorded in Victoria (11%) and Western Australia (8%).

COMMUNITY-BASED CORRECTIONS RATE(a), Per month



(a) Rate per 100,000 adult population.

COMMUNITY-BASED CORRECTIONS RATE(a), By State and Territory



(a) Rate per 100,000 adult population.

In the March quarter 2007, the rate of community-based corrections for males was 538 per 100,000 adult male population compared to 117 females per 100,000 adult female population. Males were almost five times more likely to be in community-based corrections than females.

Type of orders

In the March quarter 2007, there were 9,362 persons serving parole orders following a period of imprisonment. Almost three quarters (74%) of persons serving parole orders were located in three states: New South Wales (3,985 persons); Victoria (1,416); and Queensland (1,532).

For this same period, there were 32,475 persons under sentenced probation and 10,513 persons serving community service orders.

PERSONS IN CORRECTIVE SERVICES, Quarterly comparisons(a)

	NSW(b)(c)	Vic.	Qld	SA	WA	Tas.	NT	ACT in ACT(d)	ACT in NSW(b)	ACT Total(e)	Aust.(b)(c)
AVERAGE DAILY NUMBER											
Males in full-time custody											
Mar Qtr 06	r8 509	3 362	5 080	1 445	3 228	444	784	67	118	186	r22 919
Dec Qtr 06	8 719	3 788	5 229	1 543	3 296	501	795	60	103	163	23 930
Mar Qtr 07	8 833	3 802	5 226	1 600	3 312	482	803	58	108	167	24 117
Females in full-time custody											
Mar Qtr 06	r656	220	369	101	247	36	31	3	8	11	r1 663
Dec Qtr 06	696	241	426	104	283	43	30	6	5	11	1 829
Mar Qtr 07	694	244	426	112	298	34	38	5	5	10	1 851
Persons in full-time custody											
Mar Qtr 06	r9 165	3 583	5 450	1 546	3 475	479	814	71	126	197	r24 583
Dec Qtr 06	9 415	4 029	5 655	1 647	3 579	544	825	65	109	174	25 759
Mar Qtr 07	9 527	4 046	5 651	1 712	3 610	516	841	63	113	176	25 968
Indigenous persons in full-time custody											
Mar Qtr 06	r1 867	206	1 462	292	1 361	56	669	13	1	14	r5 926
Dec Qtr 06	1 921	221	1 514	319	1 464	66	674	7	16	23	6 185
Mar Qtr 07	1 961	222	1 532	347	1 511	65	688	8	15	22	6 333
AVERAGE NUMBER ON FIRST DAY OF MONTH											
Unsentenced persons in full-time custody											
Mar Qtr 06	r2 158	655	1 118	523	582	100	153	63	—	63	r5 352
Dec Qtr 06	2 291	767	1 221	553	632	121	182	64	—	64	5 833
Mar Qtr 07	2 371	747	1 241	599	670	111	168	64	—	64	5 971
Sentenced persons in full-time custody											
Mar Qtr 06	r6 945	2 901	4 305	1 014	2 851	375	652	1	124	124	r19 045
Dec Qtr 06	7 137	3 284	4 418	1 109	2 958	433	627	2	113	114	19 967
Mar Qtr 07	7 127	3 271	4 374	1 100	2 901	394	663	—	109	109	19 830
Persons in full-time custody											
Mar Qtr 06	r9 103	3 557	5 423	1 537	3 433	475	805	64	124	187	r24 397
Dec Qtr 06	9 428	4 051	5 639	1 662	3 590	554	809	66	113	179	25 800
Mar Qtr 07	9 498	4 018	5 615	1 699	3 571	505	831	64	109	173	25 801
Males in community-based corrections(f)											
Mar Qtr 06	14 969	6 742	9 413	4 501	4 356	916	985	885	..	885	42 766
Dec Qtr 06	15 054	5 958	9 515	4 578	4 058	959	1 041	953	..	953	42 116
Mar Qtr 07	15 094	6 077	9 377	4 568	4 063	971	1 054	942	..	942	42 146
Females in community-based corrections(f)											
Mar Qtr 06	2 616	1 486	2 635	1 014	1 204	242	145	162	..	162	9 503
Dec Qtr 06	2 670	1 317	2 675	1 079	1 178	257	141	161	..	161	9 478
Mar Qtr 07	2 698	1 342	2 589	1 066	1 182	265	141	152	..	152	9 436
Persons in community-based corrections(f)(g)											
Mar Qtr 06	17 638	8 277	12 047	5 514	5 560	1 159	1 130	1 047	..	1 047	52 372
Dec Qtr 06	17 783	7 313	12 190	5 657	5 236	1 216	1 182	1 114	..	1 114	51 690
Mar Qtr 07	17 860	7 449	11 966	5 635	5 245	1 236	1 196	1 094	..	1 094	51 680

.. not applicable

— nil or rounded to zero (including null cells)

r revised

(a) For the calculation of quarterly figures – see Explanatory Notes, paragraph 5.

(b) Custodial data includes ACT prisoners held in NSW prisons. The ACT in NSW figures are a subset of the NSW figures and are not separately counted in the Australian totals – see Explanatory Notes, paragraph 19.

(c) NSW custodial data prior to October 2006 have been revised – see Explanatory Notes, paragraph 30.

(d) Refers to unsentenced persons in ACT prison custody and may include some sentenced fine default only prisoners – see Explanatory Notes, paragraph 19.

(e) ACT in ACT figures and ACT in NSW figures may not add to ACT total due to rounding.

(f) With the exception of Vic. and Tas., includes persons with breached or suspended orders.

(g) Includes persons whose sex is unknown.

PERSONS IN CORRECTIVE SERVICES, Quarterly comparisons(a) *continued*

	NSW(b)(c)	Vic.	Qld	SA	WA	Tas.	NT	ACT in ACT(d)	ACT in NSW(b)	ACT Total(e)	Aust.(b)(c)
PERCENTAGE CHANGE (AVERAGE DAILY NUMBER)											
Males in full-time custody											
Mar Qtr 06 to Mar Qtr 07	3.8	13.1	2.9	10.7	2.6	8.6	2.4	-13.4	-8.5	-10.2	5.2
Dec Qtr 06 to Mar Qtr 07	1.3	0.4	-0.1	3.7	0.5	-3.8	1.0	-3.3	4.9	2.5	0.8
Females in full-time custody											
Mar Qtr 06 to Mar Qtr 07	5.8	10.9	15.4	10.9	20.6	-5.6	22.6	66.7	-37.5	-9.1	11.3
Dec Qtr 06 to Mar Qtr 07	-0.3	1.2	—	7.7	5.3	-20.9	26.7	-16.7	—	-9.1	1.2
Persons in full-time custody											
Mar Qtr 06 to Mar Qtr 07	3.9	12.9	3.7	10.7	3.9	7.7	3.3	-11.3	-10.3	-10.7	5.6
Dec Qtr 06 to Mar Qtr 07	1.2	0.4	-0.1	3.9	0.9	-5.1	1.9	-3.1	3.7	1.1	0.8
Indigenous persons in full-time custody											
Mar Qtr 06 to Mar Qtr 07	5.0	7.8	4.8	18.8	11.0	16.1	2.8	-38.5	1 400.0	57.1	6.9
Dec Qtr 06 to Mar Qtr 07	2.1	0.5	1.2	8.8	3.2	-1.5	2.1	14.3	-6.3	-4.3	2.4
PERCENTAGE CHANGE (AVERAGE NUMBER ON FIRST DAY OF MONTH)											
Unsentenced persons in full-time custody											
Mar Qtr 06 to Mar Qtr 07	9.9	14.0	11.0	14.5	15.1	11.0	9.8	1.6	—	1.6	11.6
Dec Qtr 06 to Mar Qtr 07	3.5	-2.6	1.6	8.3	6.0	-8.3	-7.7	—	—	—	2.4
Sentenced persons in full-time custody											
Mar Qtr 06 to Mar Qtr 07	2.6	12.8	1.6	8.5	1.8	5.1	1.7	-100.0	-12.1	-12.1	4.1
Dec Qtr 06 to Mar Qtr 07	-0.1	-0.4	-1.0	-0.8	-1.9	-9.0	5.7	-100.0	-3.5	-4.4	-0.7
Persons in full-time custody											
Mar Qtr 06 to Mar Qtr 07	4.3	13.0	3.5	10.5	4.0	6.3	3.2	—	-12.1	-7.5	5.8
Dec Qtr 06 to Mar Qtr 07	0.7	-0.8	-0.4	2.2	-0.5	-8.8	2.7	-3.0	-3.5	-3.4	—
Males in community-based corrections(f)											
Mar Qtr 06 to Mar Qtr 07	0.8	-9.9	-0.4	1.5	-6.7	6.0	7.0	6.4	..	6.4	-1.4
Dec Qtr 06 to Mar Qtr 07	0.3	2.0	-1.5	-0.2	0.1	1.3	1.2	-1.2	..	-1.2	0.1
Females in community-based corrections(f)											
Mar Qtr 06 to Mar Qtr 07	3.1	-9.7	-1.7	5.1	-1.8	9.5	-2.8	-6.2	..	-6.2	-0.7
Dec Qtr 06 to Mar Qtr 07	1.0	1.9	-3.2	-1.2	0.3	3.1	—	-5.6	..	-5.6	-0.4
Persons in community-based corrections(f)(g)											
Mar Qtr 06 to Mar Qtr 07	1.3	-10.0	-0.7	2.2	-5.7	6.6	5.8	4.5	..	4.5	-1.3
Dec Qtr 06 to Mar Qtr 07	0.4	1.9	-1.8	-0.4	0.2	1.6	1.2	-1.8	..	-1.8	—

.. not applicable
 — nil or rounded to zero (including null cells)

(a) For the calculation of quarterly figures – see Explanatory Notes, paragraph 5.
 (b) Custodial data includes ACT prisoners held in NSW prisons. The ACT in NSW figures are a subset of the NSW figures and are not separately counted in the Australian totals – see Explanatory Notes, paragraph 19.
 (c) NSW custodial data prior to October 2006 have been revised – see Explanatory Notes, paragraph 30.

(d) Refers to unsentenced persons in ACT prison custody and may include some sentenced fine default only prisoners – see Explanatory Notes, paragraph 19.
 (e) ACT in ACT figures and ACT in NSW figures may not add to ACT total due to rounding.
 (f) With the exception of Vic. and Tas., includes persons with breached or suspended orders.
 (g) Includes persons whose sex is unknown.

PERSONS IN FULL-TIME CUSTODY

	NSW(a)(b)	Vic.(c)	Qld	SA	WA	Tas.	NT	ACT in ACT(d)	ACT in NSW(a)(e)	ACT Total(f)	Aust.(a)(b)(c)
AVERAGE DAILY NUMBER											
2004	r8 654	3 595	5 283	1 473	3 161	483	727	68	118	186	r23 444
2005	r9 043	3 610	5 351	1 521	3 445	526	791	66	119	185	r24 353
2006	r9 281	3 825	5 569	1 590	3 517	518	803	66	115	181	r25 169
2006											
Mar Qtr	r9 165	3 583	5 450	1 546	3 475	479	814	71	126	197	r24 583
Jun Qtr	r9 241	3 710	5 568	1 569	3 472	501	804	69	118	186	r24 933
Sep Qtr	r9 300	3 970	5 601	1 597	3 542	546	771	60	107	167	r25 387
Dec Qtr	9 415	4 029	5 655	1 647	3 579	544	825	65	109	174	25 759
2007											
Mar Qtr	9 527	4 046	5 651	1 712	3 610	516	841	63	113	176	25 968
2006											
Jan	r9 066	3 559	5 413	1 529	3 411	472	780	70	130	200	r24 299
Feb	r9 142	3 560	5 460	1 532	3 482	480	817	68	127	195	r24 541
Mar	r9 284	3 626	5 478	1 577	3 532	486	846	74	122	196	r24 903
Apr	r9 284	3 648	5 524	1 562	3 469	491	831	76	118	194	r24 884
May	r9 233	3 666	5 587	1 568	3 448	502	797	71	119	190	r24 872
Jun	r9 205	3 818	5 592	1 578	3 500	509	783	59	117	176	r25 045
Jul	r9 237	3 929	5 574	1 566	3 513	530	776	59	113	172	r25 185
Aug	r9 304	3 973	5 585	1 603	3 541	554	766	57	108	165	r25 382
Sep	r9 359	4 011	5 644	1 623	3 574	554	771	64	101	164	r25 600
Oct	9 391	4 050	5 645	1 642	3 565	570	809	70	106	176	25 743
Nov	9 475	4 039	5 691	1 661	3 608	536	830	69	109	178	25 909
Dec	9 380	3 997	5 631	1 638	3 567	526	834	57	111	168	25 630
2007											
Jan	9 430	3 997	5 624	1 658	3 566	513	824	63	126	188	25 674
Feb	9 530	4 057	5 638	1 719	3 599	514	834	66	109	175	25 956
Mar	9 622	4 086	5 691	1 761	3 666	522	864	61	104	164	26 273

r revised

- (a) Includes ACT prisoners held in NSW prisons. The ACT in NSW figures are a subset of the NSW figures and are not separately counted in the Australian totals – see Explanatory Notes, paragraph 19.
- (b) NSW custodial data prior to October 2006 have been revised – see Explanatory Notes, paragraph 30.
- (c) As of 1 July 2005, the definition of an adult changed in Vic. to a person aged 18 years and over – see Explanatory Notes, paragraph 32.

- (d) Refers to unsentenced persons in ACT prison custody and may include some sentenced fine default only prisoners – see Explanatory Notes, paragraph 19.
- (e) Prior to December quarter 2004, these figures are a single count taken on a specific day of the month and are not an average of the daily prisoner population for that month.
- (f) ACT in ACT figures and ACT in NSW figures may not add to ACT total due to rounding.

IMPRISONMENT RATES

	NSW(a)(b)	Vic.(c)	Qld	SA	WA	Tas.	NT	ACT(d)	Aust.(b)(c)
RATE PER 100,000 ADULT POPULATION									
2004	r166.8	93.1	179.2	124.4	212.6	133.3	520.0	75.5	r152.7
2005	r172.7	93.0	177.3	127.4	227.5	143.3	556.8	74.4	r156.8
2006	r175.6	98.0	180.1	132.0	227.5	139.7	552.3	72.0	r160.0
2006									
Mar Qtr	r174.0	92.4	178.1	128.9	226.8	129.9	565.3	78.8	r157.3
Jun Qtr	r175.1	95.4	180.9	130.6	225.4	135.3	555.1	74.3	r158.9
Sep Qtr	r175.7	101.4	180.3	132.3	228.2	147.0	527.7	66.2	r160.9
Dec Qtr	177.5	102.6	181.2	136.2	229.6	146.4	561.6	68.8	162.7
2007									
Mar Qtr	179.1	102.6	180.1	141.2	230.3	138.5	569.6	69.5	163.4
2006									
Jan	r172.0	91.8	176.9	127.4	222.7	127.9	541.2	80.0	r155.5
Feb	r173.5	91.8	178.4	127.7	227.3	130.0	567.4	78.2	r157.0
Mar	r176.4	93.5	179.0	131.4	230.6	131.8	587.5	78.2	r159.3
Apr	r175.9	93.8	179.5	130.0	225.2	132.7	574.0	77.1	r158.6
May	r174.9	94.2	181.5	130.5	223.8	135.5	550.3	75.8	r158.5
Jun	r174.4	98.1	181.7	131.3	227.2	137.7	541.1	69.9	r159.6
Jul	r174.4	100.3	179.4	129.7	226.3	142.7	531.4	68.2	r159.6
Aug	r175.8	101.5	179.8	132.8	228.1	149.2	524.1	65.3	r160.8
Sep	r177.0	102.4	181.7	134.5	230.3	149.3	527.6	65.1	r162.2
Oct	177.1	103.1	180.8	135.8	228.7	153.3	551.4	69.7	162.6
Nov	178.7	102.8	182.3	137.4	231.4	144.2	565.6	70.4	163.7
Dec	176.8	101.8	180.4	135.4	228.8	141.5	568.1	66.3	161.9
2007									
Jan	177.0	101.3	179.2	136.7	227.4	137.6	558.0	74.3	161.5
Feb	179.2	102.9	179.7	141.8	229.5	137.8	564.8	69.2	163.3
Mar	181.1	103.6	181.3	145.2	233.8	140.0	585.5	64.8	165.3

r revised

(a) Excludes ACT prisoners held in NSW prisons.

(b) NSW custodial data prior to October 2006 have been revised – see Explanatory Notes, paragraph 30.

(c) As of 1 July 2005, the definition of an adult changed in Vic. to a person aged 18 years and over – see Explanatory Notes, paragraph 32.

(d) Includes ACT prisoners held in ACT as well as ACT prisoners held in NSW – see Explanatory Notes, paragraph 21.

PERSONS IN FULL-TIME CUSTODY, By sex

	NSW(a)(b)	Vic.(c)	Qld	SA	WA	Tas.	NT	ACT in ACT(d)	ACT in NSW(a)(e)	ACT Total(f)	Aust.(a)(b)(c)
MALES (AVERAGE DAILY NUMBER)											
2004	r8 044	3 346	4 934	1 384	2 905	452	708	64	113	176	r21 839
2005	r8 396	3 358	4 988	1 425	3 190	495	766	63	113	176	r22 679
2006	r8 601	3 588	5 168	1 488	3 257	478	771	60	108	169	r23 412
2006											
Mar Qtr	r8 509	3 362	5 080	1 445	3 228	444	784	67	118	186	r22 919
Jun Qtr	r8 570	3 475	5 173	1 470	3 221	461	770	63	109	172	r23 203
Sep Qtr	r8 605	3 721	5 188	1 493	3 282	506	737	52	102	154	r23 585
Dec Qtr	8 719	3 788	5 229	1 543	3 296	501	795	60	103	163	23 930
2007											
Mar Qtr	8 833	3 802	5 226	1 600	3 312	482	803	58	108	167	24 117
Jan	8 745	3 754	5 205	1 548	3 279	479	790	59	120	179	23 859
Feb	8 840	3 814	5 219	1 610	3 302	479	797	61	104	165	24 122
Mar	8 915	3 839	5 253	1 644	3 355	488	821	56	100	155	24 371
FEMALES (AVERAGE DAILY NUMBER)											
2004	r610	249	349	88	255	31	18	4	5	10	r1 605
2005	r647	253	364	95	255	31	26	3	6	9	r1 674
2006	r679	237	401	102	260	40	32	6	7	12	r1 757
2006											
Mar Qtr	r656	220	369	101	247	36	31	3	8	11	r1 663
Jun Qtr	r670	235	395	100	251	39	33	6	8	14	r1 730
Sep Qtr	r694	249	413	104	260	40	34	8	5	13	r1 802
Dec Qtr	696	241	426	104	283	43	30	6	5	11	1 829
2007											
Mar Qtr	694	244	426	112	298	34	38	5	5	10	1 851
Jan	685	242	419	110	287	34	34	4	5	9	1 815
Feb	690	243	419	109	296	35	37	6	5	11	1 835
Mar	707	247	438	117	311	33	43	5	4	9	1 902
PERSONS (AVERAGE DAILY NUMBER)											
2004	r8 654	3 595	5 283	1 473	3 161	483	727	68	118	186	r23 444
2005	r9 043	3 610	5 351	1 521	3 445	526	791	66	119	185	r24 353
2006	r9 281	3 825	5 569	1 590	3 517	518	803	66	115	181	r25 169
2006											
Mar Qtr	r9 165	3 583	5 450	1 546	3 475	479	814	71	126	197	r24 583
Jun Qtr	r9 241	3 710	5 568	1 569	3 472	501	804	69	118	186	r24 933
Sep Qtr	r9 300	3 970	5 601	1 597	3 542	546	771	60	107	167	r25 387
Dec Qtr	9 415	4 029	5 655	1 647	3 579	544	825	65	109	174	25 759
2007											
Mar Qtr	9 527	4 046	5 651	1 712	3 610	516	841	63	113	176	25 968
Jan	9 430	3 997	5 624	1 658	3 566	513	824	63	126	188	25 674
Feb	9 530	4 057	5 638	1 719	3 599	514	834	66	109	175	25 956
Mar	9 622	4 086	5 691	1 761	3 666	522	864	61	104	164	26 273

r revised

- (a) Includes ACT prisoners held in NSW prisons. The ACT in NSW figures are a subset of the NSW figures and are not separately counted in the Australian totals – see Explanatory Notes, paragraph 19.
- (b) NSW custodial data prior to October 2006 have been revised – see Explanatory Notes, paragraph 30.
- (c) As of 1 July 2005, the definition of an adult changed in Vic. to a person aged 18 years and over – see Explanatory Notes, paragraph 32.

- (d) Refers to unsentenced persons in ACT prison custody and may include some sentenced fine default only prisoners – see Explanatory Notes, paragraph 19.
- (e) Prior to the December quarter 2004, the figures are a single count taken on a specific day of the month and are not an average of the daily prisoner population for that month.
- (f) ACT in ACT figures and ACT in NSW figures may not add to ACT total due to rounding.

IMPRISONMENT RATES, By sex

	NSW(a)(b)	Vic.(c)	Qld	SA	WA	Tas.	NT	ACT(d)	Aust.(b)(c)
MALES (RATE PER 100,000 ADULT POPULATION)									
2004	r315.1	177.6	338.4	238.6	393.5	256.3	957.5	146.3	r289.3
2005	r325.6	177.2	333.5	243.4	423.5	276.6	1 017.4	144.3	r296.5
2006	r330.4	188.3	336.7	251.7	422.8	264.9	996.7	136.5	r301.9
2006									
Mar Qtr	r328.0	177.6	334.7	245.4	423.2	246.8	1 025.1	151.4	r297.7
Jun Qtr	r329.8	183.0	338.7	249.2	419.7	255.9	1 001.3	139.9	r300.2
Sep Qtr	r329.9	194.5	336.1	252.0	424.2	279.7	946.3	124.1	r303.0
Dec Qtr	333.6	197.4	337.1	259.8	424.0	276.4	1 015.1	131.3	306.5
2007									
Mar Qtr	336.8	197.3	335.1	268.8	423.3	265.5	1 018.3	133.6	307.6
Jan	333.0	194.8	333.8	260.0	419.0	263.8	1 002.0	143.8	304.3
Feb	337.3	197.9	334.6	270.4	422.0	263.8	1 010.3	132.3	307.7
Mar	340.3	199.2	336.8	276.1	428.7	268.9	1 041.6	124.5	310.8
FEMALES (RATE PER 100,000 ADULT POPULATION)									
2004	r23.3	12.6	23.4	14.6	34.1	16.6	28.0	7.7	r20.6
2005	r24.4	12.7	23.9	15.7	33.5	16.7	38.3	7.1	r21.2
2006	r25.4	11.8	25.8	16.7	33.6	20.8	46.9	9.7	r22.0
2006									
Mar Qtr	r24.6	11.1	24.0	16.6	32.1	18.8	45.6	9.0	r21.0
Jun Qtr	r25.0	11.8	25.5	16.3	32.5	20.7	48.9	11.2	r21.7
Sep Qtr	r26.0	12.5	26.4	16.9	33.4	20.9	49.9	10.3	r22.5
Dec Qtr	26.0	12.0	27.2	16.9	36.2	22.7	43.2	8.4	22.8
2007									
Mar Qtr	25.9	12.1	27.0	18.2	38.0	17.7	55.2	7.4	23.0
Jan	25.5	12.0	26.6	17.8	36.5	17.6	49.0	7.1	22.5
Feb	25.7	12.0	26.6	17.7	37.7	18.1	53.9	8.1	22.8
Mar	26.4	12.2	27.7	19.0	39.6	17.5	62.6	7.1	23.6
PERSONS (RATE PER 100,000 ADULT POPULATION)									
2004	r166.8	93.1	179.2	124.4	212.6	133.3	520.0	75.5	r152.7
2005	r172.7	93.0	177.3	127.4	227.5	143.3	556.8	74.4	r156.8
2006	r175.6	98.0	180.1	132.0	227.5	139.7	552.3	72.0	r160.0
2006									
Mar Qtr	r174.0	92.4	178.1	128.9	226.8	129.9	565.3	78.8	r157.3
Jun Qtr	r175.1	95.4	180.9	130.6	225.4	135.3	555.1	74.3	r158.9
Sep Qtr	r175.7	101.4	180.3	132.3	228.2	147.0	527.7	66.2	r160.9
Dec Qtr	177.5	102.6	181.2	136.2	229.6	146.4	561.6	68.8	162.7
2007									
Mar Qtr	179.1	102.6	180.1	141.2	230.3	138.5	569.6	69.5	163.4
Jan	177.0	101.3	179.2	136.7	227.4	137.6	558.0	74.3	161.5
Feb	179.2	102.9	179.7	141.8	229.5	137.8	564.8	69.2	163.3
Mar	181.1	103.6	181.3	145.2	233.8	140.0	585.5	64.8	165.3

r revised

(a) Excludes ACT prisoners held in NSW prisons.

(b) NSW custodial data prior to October 2006 have been revised – see Explanatory Notes, paragraph 30.

(c) As of 1 July 2005, the definition of an adult changed in Vic. to a person aged 18 years and over – see Explanatory Notes, paragraph 32.

(d) Includes ACT prisoners held in ACT as well as ACT prisoners held in NSW – see Explanatory Notes, paragraph 21.

INDIGENOUS PERSONS IN FULL-TIME CUSTODY, By sex

	NSW(a)(b)	Vic.(c)	Qld	SA	WA	Tas.	NT	ACT in ACT(d)	ACT in NSW(a)(e)	ACT Total(f)	Aust.(a)(b)(c)
MALES (AVERAGE DAILY NUMBER)											
2004	r1 490	167	1 156	240	1 083	na	558	8	8	17	na
2005	r1 578	177	1 236	259	1 257	61	609	8	4	12	r5 185
2006	r1 716	202	1 379	281	1 274	53	637	8	9	17	r5 548
2006											
Mar Qtr	r1 690	193	1 361	266	1 237	49	645	12	1	13	r5 452
Jun Qtr	r1 724	198	1 386	279	1 263	50	638	8	8	16	r5 546
Sep Qtr	r1 727	207	1 376	282	1 279	58	613	6	10	17	r5 549
Dec Qtr	1 721	209	1 391	295	1 314	54	653	7	15	22	5 644
2007											
Mar Qtr	1 768	207	1 409	318	1 348	57	657	7	15	22	5 771
Jan	1 750	204	1 401	302	1 332	58	652	6	19	25	5 705
Feb	1 778	210	1 418	324	1 342	57	651	7	14	20	5 787
Mar	1 776	207	1 410	328	1 368	57	668	9	11	20	5 823
FEMALES (AVERAGE DAILY NUMBER)											
2004	r175	14	90	16	124	na	10	—	—	—	na
2005	r182	17	98	24	131	6	20	—	—	—	r479
2006	r194	13	114	24	134	8	23	1	—	1	r512
2006											
Mar Qtr	r178	12	101	26	124	7	25	1	—	1	r474
Jun Qtr	r194	14	119	24	133	6	24	1	—	1	r515
Sep Qtr	r205	14	113	24	131	8	23	1	—	1	r517
Dec Qtr	200	13	122	24	150	11	21	—	1	1	541
2007											
Mar Qtr	194	15	123	29	163	7	30	—	—	—	562
Jan	189	13	121	24	154	8	27	—	—	—	536
Feb	193	16	121	28	162	6	30	1	—	1	556
Mar	199	16	128	35	174	8	34	—	—	—	593
PERSONS (AVERAGE DAILY NUMBER)											
2004	r1 665	181	1 246	256	1 207	na	569	8	8	17	na
2005	r1 761	194	1 334	284	1 388	67	629	8	4	12	r5 664
2006	r1 910	215	1 492	305	1 408	61	660	9	9	18	r6 060
2006											
Mar Qtr	r1 867	206	1 462	292	1 361	56	669	13	1	14	r5 926
Jun Qtr	r1 918	212	1 505	303	1 396	56	662	9	8	17	r6 061
Sep Qtr	r1 932	221	1 489	306	1 410	66	637	7	10	17	r6 067
Dec Qtr	1 921	221	1 514	319	1 464	66	674	7	16	23	6 185
2007											
Mar Qtr	1 961	222	1 532	347	1 511	65	688	8	15	22	6 333
Jan	1 940	217	1 522	326	1 486	66	678	6	19	25	6 241
Feb	1 971	226	1 539	352	1 503	63	681	7	14	21	6 343
Mar	1 975	222	1 537	363	1 542	65	703	9	11	20	6 416

— nil or rounded to zero (including null cells)

na not available

r revised

(a) Includes ACT prisoners held in NSW prisons. The ACT in NSW figures are a subset of the NSW figures and are not separately counted in the Australian totals – see Explanatory Notes, paragraph 19.

(b) NSW custodial data prior to October 2006 have been revised – see Explanatory Notes, paragraph 30.

(c) As of 1 July 2005, the definition of an adult changed in Vic. to a person aged 18 years and over – see Explanatory Notes, paragraph 32.

(d) Refers to unsentenced persons in ACT prison custody and may include some sentenced fine default only prisoners – see Explanatory Notes, paragraph 19.

(e) Prior to the December quarter 2004, the figures are a single count taken on a specific day of the month and are not an average of the daily prisoner population for that month.

(f) ACT in ACT figures and ACT in NSW figures may not add to ACT total due to rounding.

INDIGENOUS IMPRISONMENT RATES, By sex(a)

	NSW(b)(c)	Vic. (d)	Qld	SA	WA	Tas.	NT	ACT(e)	Aust. (c)(d)
MALES (RATE PER 100,000 ADULT INDIGENOUS POPULATION)									
2004	r3 929.0	1 952.2	3 204.3	3 244.6	5 736.5	na	3 271.4	1 411.3	na
2005	r4 074.1	2 033.0	3 331.5	3 408.0	6 478.5	1 232.2	3 490.8	1 000.8	r3 839.3
2006	r4 318.0	2 288.5	3 604.8	3 591.2	6 382.1	1 038.6	3 577.3	1 366.7	r4 006.0
2006									
Mar Qtr	r4 271.7	2 194.3	3 558.7	3 403.2	6 198.0	956.7	3 619.3	1 050.2	r3 936.5
Jun Qtr	r4 340.1	2 242.8	3 624.5	3 574.7	6 329.8	982.0	3 581.2	1 306.2	r4 004.3
Sep Qtr	r4 344.7	2 347.7	3 597.2	3 607.7	6 409.0	1 144.9	3 444.0	1 329.4	r4 006.6
Dec Qtr	4 314.8	2 366.5	3 637.9	3 775.0	6 587.0	1 068.6	3 665.7	1 773.3	4 075.2
2007									
Mar Qtr	4 327.9	2 271.4	3 573.9	3 968.5	6 573.7	1 101.9	3 616.8	1 719.2	4 058.3
Jan	4 274.2	2 238.6	3 552.6	3 771.2	6 497.9	1 110.7	3 585.9	1 963.1	4 011.5
Feb	4 354.8	2 309.9	3 596.1	4 046.0	6 545.6	1 098.4	3 584.5	1 599.2	4 069.6
Mar	4 357.3	2 269.4	3 575.2	4 095.9	6 674.8	1 096.3	3 676.9	1 583.5	4 094.9
FEMALES (RATE PER 100,000 ADULT INDIGENOUS POPULATION)									
2004	r439.2	155.8	224.4	198.6	612.9	na	57.9	6.8	na
2005	r447.4	190.0	239.5	299.3	631.7	115.1	107.2	14.1	r332.0
2006	r463.9	145.0	270.8	291.3	628.1	149.4	124.9	78.3	r346.2
2006									
Mar Qtr	r425.0	135.3	239.8	313.4	580.6	131.7	132.4	71.4	r320.4
Jun Qtr	r464.9	152.7	282.6	285.5	620.7	111.1	128.4	88.9	r348.1
Sep Qtr	r488.3	152.1	269.2	285.2	610.4	142.3	125.1	68.4	r349.8
Dec Qtr	476.5	139.9	291.0	281.4	699.6	211.5	113.7	84.6	365.8
2007									
Mar Qtr	451.5	158.4	285.9	335.5	741.9	136.6	159.5	21.4	370.4
Jan	441.1	139.1	280.6	277.3	700.4	152.1	140.5	12.3	353.5
Feb	449.8	171.6	280.1	323.5	734.4	115.3	157.3	46.7	366.5
Mar	463.4	165.7	296.3	404.4	790.2	140.2	180.5	7.7	390.8
PERSONS (RATE PER 100,000 ADULT INDIGENOUS POPULATION)									
2004	r2 137.1	1 038.4	1 638.8	1 670.9	3 088.8	na	1 625.3	702.3	na
2005	r2 211.8	1 097.2	1 710.0	1 798.4	3 452.9	662.6	1 760.5	502.4	r2 027.7
2006	r2 336.5	1 202.2	1 860.2	1 881.1	3 404.6	586.0	1 810.6	715.1	r2 116.2
2006									
Mar Qtr	r2 294.1	1 150.9	1 822.0	1 802.0	3 291.2	536.8	1 835.0	555.1	r2 069.2
Jun Qtr	r2 347.8	1 183.6	1 875.7	1 870.2	3 375.6	538.7	1 814.3	690.6	r2 116.3
Sep Qtr	r2 362.1	1 235.0	1 855.7	1 885.9	3 408.4	634.6	1 745.7	691.7	r2 118.3
Dec Qtr	2 341.4	1 237.9	1 886.5	1 964.6	3 540.5	632.4	1 848.1	919.3	2 159.7
2007									
Mar Qtr	2 334.2	1 199.8	1 856.4	2 081.6	3 554.2	611.1	1 849.3	860.1	2 154.5
Jan	2 302.8	1 173.9	1 843.5	1 956.5	3 496.1	623.3	1 824.4	976.0	2 123.1
Feb	2 346.4	1 225.5	1 864.0	2 112.6	3 536.8	598.5	1 832.3	813.6	2 157.9
Mar	2 354.6	1 202.6	1 862.5	2 178.6	3 627.9	610.2	1 889.4	786.1	2 182.7

na not available

r revised

(a) The rates calculation uses the Indigenous population projection for 30 June of that calendar year as the denominator – see Explanatory Notes, paragraphs 25-28.

(b) Excludes ACT prisoners held in NSW prisons.

(c) NSW custodial data prior to October 2006 have been revised – see Explanatory Notes, paragraph 30.

(d) As of 1 July 2005, the definition of an adult changed in Vic. to a person aged 18 years and over – see Explanatory Notes, paragraph 32.

(e) Includes ACT prisoners held in ACT as well as ACT prisoners held in NSW – see Explanatory Notes, paragraph 21.

PERSONS IN FULL-TIME CUSTODY, By type of custody

	NSW(a)(b)(c)	Vic.(d)(e)	Qld	SA	WA	Tas.	NT	ACT in ACT(f)	ACT in NSW (a)(g)	ACT Total(h)	Aust.(i)
PERSONS IN SECURE CUSTODY (AVERAGE DAILY NUMBER)											
2004	r4 616	3 240	4 407	1 308	2 204	394	571	68	24	92	r16 807
2005	r5 207	3 225	4 500	1 348	2 489	442	622	66	29	95	r17 901
2006	r5 736	3 443	4 766	1 413	2 608	444	616	66	33	99	r19 093
2006											
Mar Qtr	r5 645	3 187	4 651	1 387	2 580	402	647	71	36	106	r18 569
Jun Qtr	r5 663	3 309	4 761	1 391	2 597	428	628	69	36	104	r18 846
Sep Qtr	r5 753	3 608	4 791	1 415	2 609	467	580	60	28	88	r19 283
Dec Qtr	5 880	3 662	4 857	1 459	2 645	479	612	65	33	98	19 659
2007											
Mar Qtr	5 931	3 671	4 882	1 520	2 709	458	614	63	34	97	19 850
Jan	5 898	3 624	4 867	1 469	2 677	454	603	63	40	103	19 655
Feb	5 955	3 682	4 877	1 527	2 712	452	615	66	32	98	19 885
Mar	5 944	3 709	4 902	1 566	2 739	468	625	61	29	90	20 014
PERSONS IN OPEN CUSTODY (AVERAGE DAILY NUMBER)											
2004	r4 038	356	876	165	957	89	155	..	94	94	r6 637
2005	r3 835	385	851	172	956	84	169	..	89	89	r6 452
2006	r3 545	381	803	177	909	74	187	..	82	82	r6 076
2006											
Mar Qtr	r3 520	395	799	159	895	78	167	..	91	91	r6 014
Jun Qtr	r3 577	401	806	178	875	73	176	..	82	82	r6 087
Sep Qtr	r3 546	363	810	182	933	79	192	..	79	79	r6 104
Dec Qtr	3 535	367	798	188	934	65	213	..	76	76	6 100
2007											
Mar Qtr	3 596	375	769	192	901	58	227	..	79	79	6 118
Jan	3 532	373	757	189	888	59	221	..	85	85	6 019
Feb	3 575	375	761	192	886	62	219	..	77	77	6 072
Mar	3 678	377	789	195	927	54	239	..	74	74	6 259
PERSONS IN CUSTODY (AVERAGE DAILY NUMBER)											
2004	r8 654	3 595	5 283	1 473	3 161	483	727	68	118	186	r23 444
2005	r9 043	3 610	5 351	1 521	3 445	526	791	66	119	185	r24 353
2006	r9 281	3 825	5 569	1 590	3 517	518	803	66	115	181	r25 169
2006											
Mar Qtr	r9 165	3 583	5 450	1 546	3 475	479	814	71	126	197	r24 583
Jun Qtr	r9 241	3 710	5 568	1 569	3 472	501	804	69	118	186	r24 933
Sep Qtr	r9 300	3 970	5 601	1 597	3 542	546	771	60	107	167	r25 387
Dec Qtr	9 415	4 029	5 655	1 647	3 579	544	825	65	109	174	25 759
2007											
Mar Qtr	9 527	4 046	5 651	1 712	3 610	516	841	63	113	176	25 968
Jan	9 430	3 997	5 624	1 658	3 566	513	824	63	126	188	25 674
Feb	9 530	4 057	5 638	1 719	3 599	514	834	66	109	175	25 956
Mar	9 622	4 086	5 691	1 761	3 666	522	864	61	104	164	26 273

.. not applicable

r revised

(a) Includes ACT prisoners held in NSW prisons. The ACT in NSW figures are a subset of the NSW figures and are not separately counted in the Australian totals – see Explanatory Notes, paragraph 19.

(b) The classification of some NSW correctional facilities changed from July 2005 – see Explanatory Notes, paragraph 29.

(c) NSW custodial data prior to October 2006 have been revised – see Explanatory Notes, paragraph 30.

(d) Type of custody counts in Victoria have been affected by the closure of Beechworth Prison in December 2004, and the opening of Beechworth Correctional Centre in February 2005 – see Explanatory Notes, paragraph 31.

(e) As of 1 July 2005, the definition of an adult changed in Vic. to a person aged 18 years and over – see Explanatory Notes, paragraph 32.

(f) Refers to unsentenced persons in ACT prison custody and may include some sentenced fine default only prisoners – see Explanatory Notes, paragraph 19.

(g) Prior to December quarter 2004, the figures are a single count taken on a specific day of the month and are not an average of the daily prisoner population for that month.

(h) ACT in ACT figures and ACT in NSW figures may not add to ACT total due to rounding.

(i) See footnotes a, b, c, and e.

IMPRISONMENT RATES, By type of custody

	NSW(a)(b)(c)	Vic.(d)(e)	Qld	SA	WA	Tas.	NT	ACT(f)	Aust.(c)(e)
PERSONS IN SECURE CUSTODY (RATE PER 100,000 ADULT POPULATION)									
2004	r89.7	83.9	149.5	110.4	148.2	108.7	408.7	37.2	r109.5
2005	r100.2	83.1	149.1	113.0	164.4	120.5	437.7	38.4	r115.3
2006	r109.3	88.2	154.1	117.3	168.7	119.9	423.8	39.5	r121.4
2006									
Mar Qtr	r108.0	82.2	152.0	115.6	168.4	108.9	449.2	42.5	r118.8
Jun Qtr	r108.0	85.0	154.7	115.7	168.6	115.6	433.5	41.6	r120.1
Sep Qtr	r109.4	92.1	154.2	117.2	168.1	125.7	396.6	34.9	r122.2
Dec Qtr	111.5	93.2	155.6	120.7	169.7	128.8	416.9	38.9	124.2
2007									
Mar Qtr	112.2	93.1	155.6	125.4	172.8	122.9	416.1	38.3	124.9
Jan	111.4	91.9	155.1	121.1	170.7	121.8	408.6	40.8	123.7
Feb	112.7	93.3	155.4	125.9	173.0	121.2	416.2	38.7	125.1
Mar	112.5	94.0	156.2	129.1	174.7	125.6	423.3	35.5	125.9
PERSONS IN OPEN CUSTODY (RATE PER 100,000 ADULT POPULATION)									
2004	r77.1	9.2	29.7	13.9	64.4	24.6	111.2	38.4	r43.2
2005	r72.5	9.9	28.2	14.4	63.1	22.8	119.1	36.0	r41.5
2006	r66.3	9.8	26.0	14.7	58.8	19.9	128.5	32.5	r38.6
2006									
Mar Qtr	r66.0	10.2	26.1	13.3	58.4	21.0	116.1	36.3	r38.5
Jun Qtr	r67.1	10.3	26.2	14.8	56.8	19.6	121.6	32.7	r38.8
Sep Qtr	r66.3	9.3	26.1	15.1	60.1	21.3	131.1	31.3	r38.7
Dec Qtr	66.0	9.3	25.6	15.5	59.9	17.6	144.8	29.9	38.5
2007									
Mar Qtr	66.9	9.5	24.5	15.8	57.5	15.6	153.5	31.2	38.5
Jan	65.6	9.5	24.1	15.6	56.7	15.8	149.4	33.6	37.9
Feb	66.5	9.5	24.3	15.8	56.5	16.6	148.6	30.5	38.2
Mar	68.5	9.6	25.1	16.1	59.1	14.4	162.2	29.4	39.4
PERSONS IN CUSTODY (RATE PER 100,000 ADULT POPULATION)									
2004	r166.8	93.1	179.2	124.4	212.6	133.3	520.0	75.5	r152.7
2005	r172.7	93.0	177.3	127.4	227.5	143.3	556.8	74.4	r156.8
2006	r175.6	98.0	180.1	132.0	227.5	139.7	552.3	72.0	r160.0
2006									
Mar Qtr	r174.0	92.4	178.1	128.9	226.8	129.9	565.3	78.8	r157.3
Jun Qtr	r175.1	95.4	180.9	130.6	225.4	135.3	555.1	74.3	r158.9
Sep Qtr	r175.7	101.4	180.3	132.3	228.2	147.0	527.7	66.2	r160.9
Dec Qtr	177.5	102.6	181.2	136.2	229.6	146.4	561.6	68.8	162.7
2007									
Mar Qtr	179.1	102.6	180.1	141.2	230.3	138.5	569.6	69.5	163.4
Jan	177.0	101.3	179.2	136.7	227.4	137.6	558.0	74.3	161.5
Feb	179.2	102.9	179.7	141.8	229.5	137.8	564.8	69.2	163.3
Mar	181.1	103.6	181.3	145.2	233.8	140.0	585.5	64.8	165.3

r revised

(a) Excludes ACT prisoners held in NSW prisons.

(b) The classification of some NSW correctional facilities changed from July 2005 – see Explanatory Notes, paragraph 29.

(c) NSW custodial data prior to October 2006 have been revised – see Explanatory Notes, paragraph 30.

(d) Type of custody counts in Victoria have been affected by the closure of Beechworth Prison in December 2004, and the opening of Beechworth Correctional Centre in February 2005 – see Explanatory Notes, paragraph 31.

(e) As of 1 July 2005, the definition of an adult changed in Vic. to a person aged 18 years and over – see Explanatory Notes, paragraph 32.

(f) Includes ACT prisoners held in ACT as well as ACT prisoners held in NSW – see Explanatory Notes, paragraph 21.

PERSONS IN FULL-TIME CUSTODY, By legal status(a)

	NSW(b)(c)	Vic.(d)	Qld	SA	WA	Tas.	NT	ACT in ACT(e)	ACT in NSW(b)	ACT Total(f)	Aust.(b)(c)(d)
UNSENTENCED (NUMBER ON FIRST DAY OF MONTH)											
2004	r1 985	661	1 099	479	498	96	136	63	—	63	r5 016
2005	r2 096	651	1 078	521	553	119	144	67	—	67	r5 229
2006	r2 221	700	1 176	548	603	120	164	65	—	65	r5 597
2006											
Mar Qtr	r2 158	655	1 118	523	582	100	153	63	—	63	r5 352
Jun Qtr	r2 200	644	1 166	562	598	121	153	72	—	72	r5 516
Sep Qtr	r2 234	735	1 200	551	600	139	168	60	—	60	r5 686
Dec Qtr	2 291	767	1 221	553	632	121	182	64	—	64	5 833
2007											
Mar Qtr	2 371	747	1 241	599	670	111	168	64	—	64	5 971
SENTENCED (NUMBER ON FIRST DAY OF MONTH)											
2004	r6 645	2 941	4 184	1 006	2 636	387	592	1	119	120	r18 393
2005	r6 933	2 963	4 255	1 016	2 890	409	647	1	120	121	r19 112
2006	r7 049	3 105	4 367	1 048	2 906	398	637	1	115	116	r19 509
2006											
Mar Qtr	r6 945	2 901	4 305	1 014	2 851	375	652	1	124	124	r19 045
Jun Qtr	r7 059	3 027	4 363	1 014	2 882	380	663	—	118	118	r19 389
Sep Qtr	r7 054	3 205	4 380	1 054	2 934	404	605	—	105	105	r19 637
Dec Qtr	7 137	3 284	4 418	1 109	2 958	433	627	2	113	114	19 967
2007											
Mar Qtr	7 127	3 271	4 374	1 100	2 901	394	663	—	109	109	19 830
TOTAL (NUMBER ON FIRST DAY OF MONTH)											
2004	r8 631	3 602	5 284	1 485	3 134	483	728	64	119	182	r23 409
2005	r9 029	3 614	5 333	1 537	3 442	528	791	68	120	188	r24 341
2006	r9 269	3 805	5 543	1 595	3 509	518	801	65	115	180	r25 106
2006											
Mar Qtr	r9 103	3 557	5 423	1 537	3 433	475	805	64	124	187	r24 397
Jun Qtr	r9 259	3 671	5 528	1 577	3 480	501	816	72	118	190	r24 905
Sep Qtr	r9 288	3 940	5 580	1 605	3 534	543	774	60	105	165	r25 322
Dec Qtr	9 428	4 051	5 639	1 662	3 590	554	809	66	113	179	25 800
2007											
Mar Qtr	9 498	4 018	5 615	1 699	3 571	505	831	64	109	173	25 801
Jan	9 428	3 952	5 574	1 632	3 512	510	831	58	118	176	25 497
Feb	9 478	4 026	5 624	1 691	3 562	498	818	75	107	182	25 772
Mar	9 588	4 075	5 647	1 775	3 640	507	844	59	102	161	26 135

— nil or rounded to zero (including null cells)

r revised

(a) Figures for the quarter and year for first day of month counts are calculated as a simple average – see Explanatory Notes, paragraph 5.

(b) Includes ACT prisoners held in NSW prisons. The ACT in NSW figures are a subset of the NSW figures and are not separately counted in the Australian totals – see Explanatory Notes, paragraph 19.

(c) NSW custodial data prior to October 2006 have been revised – see Explanatory Notes, paragraph 30.

(d) As of 1 July 2005, the definition of an adult changed in Vic. to a person aged 18 years and over – see Explanatory Notes, paragraph 32.

(e) Refers to unsentenced persons in ACT prison custody and may include some sentenced fine default only prisoners – see Explanatory Notes, paragraph 19.

(f) ACT in ACT figures and ACT in NSW figures may not add to ACT total due to rounding.

IMPRISONMENT RATES, By legal status(a)

	NSW(b)(c)	Vic.(d)	Qld	SA	WA	Tas.	NT	ACT(e)	Aust.(c)(d)
UNSENTENCED (RATE PER 100,000 ADULT POPULATION)									
2004	r38.8	17.1	37.3	40.4	33.5	26.3	97.2	25.5	r32.7
2005	r40.6	16.8	35.7	43.7	36.5	32.5	101.3	26.9	r33.7
2006	r42.5	17.9	38.0	45.5	39.0	32.4	112.8	25.7	r35.6
2006									
Mar Qtr	r41.5	16.9	36.5	43.6	38.0	27.0	106.2	25.2	r34.2
Jun Qtr	r42.2	16.5	37.9	46.8	38.8	32.7	105.5	28.6	r35.2
Sep Qtr	r42.7	18.8	38.6	45.6	38.7	37.3	115.2	23.7	r36.0
Dec Qtr	43.7	19.5	39.1	45.8	40.6	32.6	124.0	25.4	36.8
2007									
Mar Qtr	45.1	18.9	39.6	49.4	42.7	29.7	114.0	25.1	37.6
SENTENCED (RATE PER 100,000 ADULT POPULATION)									
2004	r127.6	76.1	141.9	85.0	177.3	106.8	423.3	48.6	r119.8
2005	r131.9	76.3	140.9	85.1	190.8	111.4	455.1	48.7	r123.1
2006	r132.8	79.5	141.2	87.0	188.0	107.5	438.0	45.9	r124.0
2006									
Mar Qtr	r131.3	74.8	140.7	84.5	186.2	101.7	452.8	49.7	r121.9
Jun Qtr	r133.2	77.8	141.7	84.4	187.1	102.8	458.2	47.0	r123.6
Sep Qtr	r132.8	81.9	141.0	87.3	189.0	108.8	414.3	41.8	r124.4
Dec Qtr	134.0	83.6	141.5	91.7	189.7	116.5	427.1	45.2	126.1
2007									
Mar Qtr	133.5	82.9	139.4	90.7	185.0	105.8	448.8	43.1	124.8
TOTAL (RATE PER 100,000 ADULT POPULATION)									
2004	r166.4	93.2	179.2	125.4	210.8	133.1	520.4	74.0	r152.5
2005	r172.4	93.1	176.7	128.8	227.3	143.9	556.4	75.6	r156.7
2006	r175.4	97.5	179.3	132.4	227.0	139.9	550.8	71.6	r159.6
2006									
Mar Qtr	r172.8	91.7	177.2	128.1	224.1	128.7	559.1	74.9	r156.1
Jun Qtr	r175.4	94.3	179.6	131.2	225.9	135.5	563.7	75.6	r158.8
Sep Qtr	r175.5	100.6	179.6	132.9	227.7	146.1	529.5	65.4	r160.4
Dec Qtr	177.7	103.1	180.7	137.4	230.3	149.1	551.0	70.6	163.0
2007									
Mar Qtr	178.6	101.9	178.9	140.1	227.8	135.5	562.8	68.2	162.3
Jan	177.1	100.2	177.6	134.6	224.0	136.9	562.8	69.4	160.4
Feb	178.3	102.1	179.2	139.5	227.2	133.7	554.0	71.8	162.2
Mar	180.4	103.3	180.0	146.4	232.1	136.1	571.6	63.5	164.4

r revised

- (a) Figures for the quarter and year for first day of month counts are calculated as a simple average – see Explanatory Notes, paragraph 5.
- (b) Excludes ACT prisoners held in NSW prisons.
- (c) NSW custodial data prior to October 2006 have been revised – see Explanatory Notes, paragraph 30.

- (d) As of 1 July 2005, the definition of an adult changed in Vic. to a person aged 18 years and over – see Explanatory Notes, paragraph 32.
- (e) Includes ACT prisoners held in ACT as well as ACT prisoners held in NSW – see Explanatory Notes, paragraph 21.

INDIGENOUS PERSONS IN FULL-TIME CUSTODY, By legal status(a)

	NSW(b)(c)	Vic. (d)	Qld	SA	WA	Tas.	NT	ACT in ACT(e)	ACT in NSW(b)	ACT Total(f)	Aust. (b)(c)(d)
UNSENTENCED (NUMBER ON FIRST DAY OF MONTH)											
2004	r369	38	245	97	190	15	99	7	—	7	r1 060
2005	r392	44	249	118	210	18	105	8	—	8	r1 144
2006	r441	48	285	116	241	19	140	10	—	10	r1 300
2006											
Mar Qtr	r446	43	290	114	242	15	128	12	—	12	r1 290
Jun Qtr	r456	46	278	122	245	16	132	10	—	10	r1 304
Sep Qtr	r419	53	275	110	225	21	145	8	—	8	r1 256
Dec Qtr	442	50	299	117	253	24	157	7	—	7	1 347
2007											
Mar Qtr	447	52	330	146	273	17	140	6	—	6	1 412
SENTENCED (NUMBER ON FIRST DAY OF MONTH)											
2004	r1 290	144	1 002	161	1 005	49	471	—	9	9	r4 122
2005	r1 372	150	1 086	172	1 181	50	522	—	4	4	r4 533
2006	r1 473	166	1 206	193	1 162	42	518	—	10	10	r4 761
2006											
Mar Qtr	r1 398	158	1 160	177	1 109	40	530	—	1	1	r4 573
Jun Qtr	r1 470	165	1 217	184	1 153	40	544	—	9	9	r4 773
Sep Qtr	r1 513	167	1 230	203	1 181	42	494	—	10	10	r4 830
Dec Qtr	1 511	174	1 218	209	1 206	45	505	—	18	18	4 868
2007											
Mar Qtr	1 509	170	1 190	192	1 219	49	541	—	13	13	4 870
TOTAL (NUMBER ON FIRST DAY OF MONTH)											
2004	r1 659	182	1 248	258	1 194	64	570	7	9	16	r5 182
2005	r1 764	194	1 335	289	1 391	69	627	8	4	12	r5 677
2006	r1 913	214	1 492	309	1 404	61	659	10	10	19	r6 061
2006											
Mar Qtr	r1 844	202	1 450	290	1 351	56	658	12	1	13	r5 863
Jun Qtr	r1 925	211	1 495	306	1 398	57	676	11	9	20	r6 078
Sep Qtr	r1 932	220	1 505	313	1 407	63	639	8	10	19	r6 086
Dec Qtr	1 952	224	1 517	326	1 459	68	662	7	18	25	6 215
2007											
Mar Qtr	1 956	222	1 520	338	1 492	66	682	6	13	19	6 282

— nil or rounded to zero (including null cells)

r revised

(a) Figures for the quarter and year for first day of the month counts are calculated as a simple average – see Explanatory Notes, paragraph 5.

(b) Includes ACT prisoners held in NSW prisons. The ACT in NSW figures are a subset of the NSW figures and are not separately counted in the Australian totals – see Explanatory Notes, paragraph 19.

(c) NSW custodial data prior to October 2006 have been revised – see Explanatory Notes, paragraph 30.

(d) As of 1 July 2005, the definition of an adult changed in Vic. to a person aged 18 years and over – see Explanatory Notes, paragraph 32.

(e) Refers to unsentenced persons in ACT prison custody and may include some sentenced fine default only prisoners – see Explanatory Notes, paragraph 19.

(f) ACT in ACT figures and ACT in NSW figures may not add to ACT total due to rounding.

INDIGENOUS IMPRISONMENT RATES, By legal status(a)(b)

	NSW(c)(d)	Vic.(e)	Qld	SA	WA	Tas.	NT	ACT(f)	Aust.(d)(e)
UNSENTENCED (RATE PER 100,000 ADULT INDIGENOUS POPULATION)									
2004	r475.6	216.4	322.7	634.2	485.2	153.5	284.2	305.3	r389.0
2005	r494.0	250.9	319.1	745.2	522.0	179.5	294.2	329.5	r409.6
2006	r541.4	267.6	355.5	714.2	583.6	184.2	384.3	376.8	r453.8
2006									
Mar Qtr	r548.2	242.5	361.0	700.8	586.0	148.0	350.0	489.2	r450.6
Jun Qtr	r560.1	255.5	346.1	754.3	591.6	157.7	361.0	409.9	r455.4
Sep Qtr	r514.6	294.7	342.8	680.3	544.9	202.7	396.7	330.6	r438.6
Dec Qtr	542.9	277.9	372.3	721.4	611.8	228.4	429.6	277.7	470.5
2007									
Mar Qtr	536.3	283.3	399.4	878.2	641.4	160.5	377.4	232.5	480.2
SENTENCED (RATE PER 100,000 ADULT INDIGENOUS POPULATION)									
2004	r1 653.3	826.5	1 318.7	1 050.4	2 570.6	491.7	1 345.3	371.9	r1 512.0
2005	r1 721.9	848.5	1 392.6	1 088.7	2 938.3	498.2	1 461.9	159.7	r1 622.8
2006	r1 798.8	929.3	1 503.6	1 191.0	2 810.5	403.8	1 421.4	380.1	r1 662.5
2006									
Mar Qtr	r1 717.1	885.9	1 446.2	1 089.3	2 681.7	389.3	1 454.1	39.7	r1 596.8
Jun Qtr	r1 795.4	923.2	1 516.9	1 134.5	2 788.1	389.3	1 491.6	370.2	r1 666.8
Sep Qtr	r1 847.4	934.4	1 532.7	1 249.6	2 856.6	405.4	1 355.4	409.9	r1 686.7
Dec Qtr	1 835.1	973.6	1 518.5	1 290.7	2 915.5	431.1	1 384.7	700.8	1 699.7
2007									
Mar Qtr	1 793.2	920.4	1 441.6	1 150.3	2 868.4	462.7	1 455.9	516.6	1 656.9
TOTAL (RATE PER 100,000 ADULT INDIGENOUS POPULATION)									
2004	r2 129.0	1 042.9	1 641.4	1 684.6	3 055.8	645.2	1 629.5	677.2	r1 901.0
2005	r2 215.9	1 099.4	1 711.7	1 833.9	3 460.3	677.8	1 756.1	489.2	r2 032.4
2006	r2 340.2	1 196.9	1 859.1	1 905.2	3 394.1	588.0	1 805.8	757.0	r2 116.2
2006									
Mar Qtr	r2 265.4	1 128.4	1 807.3	1 790.1	3 267.7	537.3	1 804.2	528.9	r2 047.4
Jun Qtr	r2 355.5	1 178.8	1 863.0	1 888.7	3 379.8	547.0	1 852.6	780.1	r2 122.2
Sep Qtr	r2 362.0	1 229.1	1 875.4	1 929.8	3 401.5	608.1	1 752.1	740.4	r2 125.2
Dec Qtr	2 378.0	1 251.5	1 890.8	2 012.0	3 527.3	659.6	1 814.2	978.4	2 170.2
2007									
Mar Qtr	2 329.5	1 203.7	1 841.0	2 028.6	3 509.8	623.3	1 833.3	749.1	2 137.1

r revised

- (a) The rates calculation uses the Indigenous population projection for 30 June of that calendar year as the denominator – see Explanatory Notes, paragraphs 25-28.
- (b) Figures for the quarter and year for first day of the month counts are calculated as a simple average – see Explanatory Notes, paragraph 5.
- (c) Excludes ACT prisoners in NSW prisons.

- (d) NSW custodial data prior to October 2006 have been revised – see Explanatory Notes, paragraph 30.
- (e) As of 1 July 2005, the definition of an adult changed in Vic. to a person aged 18 years and over – see Explanatory Notes, paragraph 32.
- (f) Includes ACT prisoners held in ACT as well as ACT prisoners held in NSW – see Explanatory Notes, paragraph 21.

SENTENCED PRISONER RECEPTIONS INTO FULL-TIME CUSTODY

	NSW(a)	Vic. (b)	Qld	SA	WA(c)	Tas.	NT	ACT in ACT	ACT in NSW(a)	ACT Total	Aust.(a)(b)
NUMBER											
2004	6 956	3 916	5 307	1 178	3 810	809	1 123	43	123	166	23 142
2005	7 143	3 630	5 654	1 068	3 799	771	1 249	39	142	181	23 353
2006	8 056	3 863	6 045	1 210	3 331	836	1 350	53	128	181	24 744
2006											
Mar Qtr	1 877	909	1 435	249	883	182	377	19	19	38	5 931
Jun Qtr	1 895	1 019	1 540	299	835	232	309	9	33	42	6 138
Sep Qtr	2 115	966	1 522	346	822	243	319	3	29	32	6 336
Dec Qtr	2 169	969	1 548	316	791	179	345	22	47	69	6 339
2007											
Mar Qtr	2 126	957	1 637	308	850	176	341	8	19	27	6 403

- (a) Includes ACT prisoners held in NSW prisons. The ACT in NSW figures are a subset of the NSW figures and are not separately counted in the Australian totals - see Explanatory Notes, paragraph 19.
- (b) As of 1 July 2005, the definition of an adult changed in Vic. to a person aged 18 years and over – see Explanatory Notes, paragraph 32.
- (c) WA implemented a new fine default strategy in the June quarter 2005 - see Explanatory Notes, paragraph 39.

PERSONS IN PERIODIC DETENTION, By sex(a)

	NSW		ACT(b)	
	no.(c)	rate(d)	no.(c)	rate(d)
MALES				
2004	687	27.3	89	73.7
2005	762	30.0	76	62.6
2006	684	26.6	52	42.2
2006				
Mar Qtr	712	27.8	56	45.5
Jun Qtr	671	26.2	52	42.3
Sep Qtr	671	26.0	52	42.0
Dec Qtr	682	26.4	48	39.0
2007				
Mar Qtr	663	25.6	48	38.9
Jan	674	26.0	44	35.3
Feb	661	25.5	47	37.9
Mar	654	25.2	54	43.3
FEMALES				
2004	62	2.4	4	3.3
2005	73	2.8	6	4.7
2006	64	2.4	3	2.2
2006				
Mar Qtr	60	2.3	4	2.9
Jun Qtr	62	2.3	2	1.8
Sep Qtr	63	2.4	2	1.6
Dec Qtr	70	2.6	3	2.4
2007				
Mar Qtr	80	3.0	4	3.3
Jan	80	3.0	4	2.7
Feb	81	3.0	4	3.3
Mar	79	3.0	5	3.9
PERSONS				
2004	749	14.6	93	37.8
2005	835	16.2	82	33.1
2006	748	14.3	55	21.8
2006				
Mar Qtr	771	14.8	59	23.8
Jun Qtr	733	14.1	54	21.7
Sep Qtr	734	14.0	54	21.5
Dec Qtr	752	14.3	52	20.4
2007				
Mar Qtr	743	14.1	53	20.8
Jan	754	14.3	48	18.7
Feb	742	14.1	52	20.3
Mar	733	13.9	59	23.3

(a) Periodic detention is a form of custody only used in NSW and the ACT.

(b) ACT has reviewed the way it treats, and counts, periodic detention orders that have been breached. From the September quarter 2005 data may not be comparable with that previously published.

(c) Average daily number.

(d) Rate per 100,000 adult population.

FEDERAL SENTENCED PERSONS IN FULL-TIME CUSTODY, By sex(a)(b)

	NSW	Vic.	Qld	SA	WA	Tas.	NT	ACT	Aust.
MALES (NUMBER ON FIRST DAY OF MONTH)									
2004	319	70	79	13	94	6	12	4	596
2005	322	73	68	12	77	8	11	4	575
2006	334	76	57	12	64	9	12	3	565
2006									
Mar Qtr	330	74	56	12	71	11	12	2	568
Jun Qtr	335	74	55	15	69	10	14	3	574
Sep Qtr	338	80	56	8	60	8	12	3	565
Dec Qtr	331	75	61	11	55	7	10	3	554
2007									
Mar Qtr	333	74	64	7	54	3	16	3	554
FEMALES (NUMBER ON FIRST DAY OF MONTH)									
2004	40	7	12	1	11	3	3	1	79
2005	48	6	15	4	9	2	1	1	85
2006	51	5	17	3	10	5	2	—	93
2006									
Mar Qtr	47	3	16	3	11	6	1	1	88
Jun Qtr	47	5	18	3	10	5	2	—	91
Sep Qtr	54	5	17	4	9	4	3	—	95
Dec Qtr	56	7	16	3	10	6	1	—	98
2007									
Mar Qtr	56	6	15	2	8	3	1	—	91
PERSONS (NUMBER ON FIRST DAY OF MONTH)									
2004	358	77	91	15	105	9	15	5	675
2005	369	79	83	16	85	11	12	5	660
2006	385	81	74	15	74	14	14	3	658
2006									
Mar Qtr	378	77	71	15	82	16	14	3	656
Jun Qtr	383	79	73	19	79	15	16	3	665
Sep Qtr	392	84	74	12	68	12	15	3	660
Dec Qtr	387	82	76	14	65	13	11	3	652
2007									
Mar Qtr	388	80	79	9	61	7	17	3	645
Jan	383	79	81	10	61	11	11	4	640
Feb	388	81	78	8	61	6	20	3	645
Mar	394	80	79	9	62	3	19	3	649

— nil or rounded to zero (including null cells)

- (a) Counts reflect the state or territory in which a prisoner was sentenced, not where they were held in custody.
- (b) Figures for the quarter and year for the first day of the month counts are calculated as a simple average – see Explanatory Notes, paragraph 5.

PERSONS IN COMMUNITY-BASED CORRECTIONS, By sex(a)(b)

	NSW	Vic. (c)	Qld	SA(d)	WA	Tas.	NT	ACT	Aust. (c)(d)
MALES (NUMBER ON FIRST DAY OF MONTH)									
2004	14 413	6 452	9 128	4 758	4 132	816	913	937	41 549
2005	15 419	6 805	9 135	4 628	4 314	850	975	954	43 081
2006	15 140	6 214	9 468	4 552	4 203	935	1 011	914	42 438
2006									
Mar Qtr	14 969	6 742	9 413	4 501	4 356	916	985	885	42 766
Jun Qtr	15 310	6 237	9 542	4 545	4 227	921	990	888	42 661
Sep Qtr	15 228	5 920	9 404	4 585	4 170	942	1 029	931	42 208
Dec Qtr	15 054	5 958	9 515	4 578	4 058	959	1 041	953	42 116
2007									
Mar Qtr	15 094	6 077	9 377	4 568	4 063	971	1 054	942	42 146
Jan	15 012	6 198	9 340	4 542	4 081	982	1 053	953	42 161
Feb	15 143	6 038	9 306	4 588	4 061	990	1 066	945	42 137
Mar	15 128	5 994	9 485	4 574	4 046	941	1 044	928	42 140
FEMALES (NUMBER ON FIRST DAY OF MONTH)									
2004	2 522	1 386	2 449	1 082	1 198	188	129	164	9 118
2005	2 718	1 517	2 532	1 033	1 239	217	135	174	9 565
2006	2 649	1 345	2 656	1 045	1 192	249	144	168	9 447
2006									
Mar Qtr	2 616	1 486	2 635	1 014	1 204	242	145	162	9 503
Jun Qtr	2 649	1 340	2 666	1 036	1 200	252	142	171	9 455
Sep Qtr	2 659	1 239	2 649	1 051	1 187	246	147	176	9 353
Dec Qtr	2 670	1 317	2 675	1 079	1 178	257	141	161	9 478
2007									
Mar Qtr	2 698	1 342	2 589	1 066	1 182	265	141	152	9 436
Jan	2 682	1 351	2 578	1 066	1 180	263	146	159	9 425
Feb	2 705	1 342	2 582	1 071	1 172	277	141	147	9 437
Mar	2 707	1 333	2 606	1 062	1 195	256	137	150	9 446
PERSONS (NUMBER ON FIRST DAY OF MONTH) (e)									
2004	17 005	8 119	11 577	5 870	5 330	1 004	1 042	1 102	51 049
2005	18 200	8 384	11 667	5 672	5 553	1 067	1 110	1 128	52 782
2006	17 843	7 601	12 124	5 597	5 395	1 184	1 155	1 082	51 981
2006									
Mar Qtr	17 638	8 277	12 047	5 514	5 560	1 159	1 130	1 047	52 372
Jun Qtr	18 011	7 620	12 208	5 582	5 427	1 173	1 132	1 059	52 212
Sep Qtr	17 941	7 193	12 053	5 635	5 357	1 187	1 176	1 107	51 649
Dec Qtr	17 783	7 313	12 190	5 657	5 236	1 216	1 182	1 114	51 690
2007									
Mar Qtr	17 860	7 449	11 966	5 635	5 245	1 236	1 196	1 094	51 680
Jan	17 754	7 583	11 918	5 608	5 261	1 245	1 199	1 112	51 680
Feb	17 916	7 409	11 888	5 659	5 233	1 267	1 207	1 092	51 671
Mar	17 911	7 354	12 091	5 637	5 241	1 197	1 181	1 078	51 690

(a) With the exception of Vic. and Tas., includes persons with breached or suspended orders.

(b) Figures for the quarter and year for first day of the month counts are calculated as a simple average

(c) As of 1 July 2005, the definition of an adult changed in Vic. to a person aged 18 years and over – see Explanatory Notes, paragraph 32.

(d) Data movements from June quarter 2005 may be influenced by data entry delays – see Explanatory Notes, paragraph 37.

(e) Includes persons whose sex is unknown.

COMMUNITY-BASED CORRECTIONS RATES, By sex(a)(b)

	NSW	Vic. (c)	Qld	SA(d)	WA	Tas.	NT	ACT	Aust. (c) (d)
MALES (RATE PER 100,000 ADULT POPULATION)									
2004	572.6	342.4	625.9	820.1	559.6	462.2	1 234.0	776.8	550.4
2005	606.2	359.2	610.8	790.5	572.7	475.4	1 296.4	783.2	563.3
2006	588.9	326.1	616.9	769.9	545.6	517.5	1 306.7	740.5	547.3
2006									
Mar Qtr	585.1	356.2	620.0	764.3	571.1	509.7	1 288.7	721.7	555.4
Jun Qtr	596.8	328.4	624.8	770.6	550.8	511.0	1 286.9	721.9	552.0
Sep Qtr	590.8	309.5	609.3	773.7	538.9	520.1	1 320.7	751.1	542.3
Dec Qtr	582.9	310.6	613.5	771.0	521.9	529.3	1 329.7	767.1	539.5
2007									
Mar Qtr	582.7	315.3	601.3	767.2	519.2	534.8	1 337.0	755.7	537.6
Jan	579.6	321.6	598.9	762.8	521.6	540.8	1 335.3	764.5	537.8
Feb	584.6	313.3	596.7	770.6	519.0	545.2	1 351.8	758.1	537.5
Mar	584.0	311.0	608.2	768.2	517.1	518.2	1 323.9	744.4	537.5
FEMALES (RATE PER 100,000 ADULT POPULATION)									
2004	97.0	70.0	164.3	179.1	160.1	101.2	196.6	130.7	116.9
2005	103.6	76.4	166.2	169.8	162.8	115.3	201.3	137.4	121.3
2006	100.0	67.4	170.6	170.4	153.8	131.2	211.0	130.8	118.4
2006									
Mar Qtr	99.2	74.8	170.9	165.9	156.6	128.1	214.0	127.4	119.9
Jun Qtr	100.2	67.2	171.9	169.3	155.2	132.8	209.4	133.5	118.8
Sep Qtr	100.2	61.9	169.5	171.0	152.5	129.1	215.5	137.1	116.9
Dec Qtr	100.4	65.5	170.3	175.3	150.8	134.9	205.4	125.1	118.1
2007									
Mar Qtr	101.2	66.5	164.0	172.8	150.5	138.9	205.5	117.9	117.2
Jan	100.6	67.0	163.3	172.7	150.2	137.7	212.2	123.3	117.0
Feb	101.4	66.5	163.6	173.5	149.2	145.0	205.0	114.0	117.2
Mar	101.5	66.1	165.1	172.1	152.1	134.0	199.2	116.3	117.3
PERSONS (RATE PER 100,000 ADULT POPULATION) (e)									
2004	332.4	210.2	392.6	495.7	358.5	276.9	745.7	447.1	332.6
2005	352.3	216.0	386.5	475.1	366.7	290.8	781.3	454.1	339.8
2006	341.9	194.7	392.2	464.7	349.0	319.5	794.1	430.1	330.4
2006									
Mar Qtr	339.5	213.4	393.7	459.6	363.0	314.0	784.2	418.8	335.1
Jun Qtr	345.7	195.8	396.6	464.5	352.3	317.0	782.0	422.0	332.8
Sep Qtr	343.0	183.7	388.0	466.8	345.2	319.7	804.6	438.7	327.3
Dec Qtr	339.3	186.2	390.5	467.8	335.9	327.1	805.1	440.5	326.5
2007									
Mar Qtr	339.7	188.9	381.3	464.7	334.5	331.9	809.8	431.4	325.2
Jan	337.7	192.3	379.8	462.5	335.5	334.2	812.1	438.5	325.2
Feb	340.8	187.9	378.8	466.7	333.7	340.1	817.5	430.6	325.1
Mar	340.7	186.5	385.3	464.9	334.2	321.3	799.9	425.1	325.2

(a) With the exception of Vic. and Tas., includes persons with breached or suspended orders.

(b) Figures for the quarter and year for the first day of the month are calculated as a simple average – see Explanatory Notes, paragraph 5.

(c) As of 1 July 2005 the definition of an adult changed in Vic. to persons aged 18 years and over – see Explanatory Notes, paragraph 32.

(d) Data movements from the June quarter 2005 may be influenced by data entry delays – see Explanatory Notes, paragraph 37.

(e) Includes persons whose sex is unknown.

PERSONS IN COMMUNITY-BASED CORRECTIONS, By type of order(a)(b)(c)

	NSW	Vic.(d)	Qld(e)	SA(f)	WA(g)	Tas.	NT	ACT	Aust.(h)
RESTRICTED MOVEMENT (NUMBER ON FIRST DAY OF MONTH)									
2004	185	10	70	331	40	..	56	5	697
2005	218	21	80	362	20	..	52	2	755
2006	205	25	44	424	10	..	38	—	746
2006									
Mar Qtr	197	24	74	419	15	..	43	—	771
Jun Qtr	199	24	68	412	9	..	33	—	745
Sep Qtr	212	25	34	430	8	..	38	—	747
Dec Qtr	212	27	—	436	6	..	38	—	720
2007									
Mar Qtr	209	26	..	418	4	..	38	—	696
Jan	195	23	..	426	5	..	41	—	690
Feb	212	26	..	431	3	..	40	—	712
Mar	221	28	..	398	4	..	34	—	685

	NSW	Vic.(d)	Qld(e)	SA(f)	WA(g)	Tas.	NT	ACT	Aust.(h)
REPARATION-FINE OPTION (NUMBER ON FIRST DAY OF MONTH)									
2004	91	1 585	1 633	943	322	100	2	..	4 677
2005	128	1 735	1 488	803	279	110	1	..	4 544
2006	84	1 214	1 321	774	240	112	1	..	3 744
2006									
Mar Qtr	101	1 672	1 429	773	236	121	1	..	4 333
Jun Qtr	81	1 165	1 407	791	262	118	1	..	3 825
Sep Qtr	80	883	1 280	781	261	108	—	..	3 392
Dec Qtr	74	1 137	1 167	749	200	100	—	..	3 427
2007									
Mar Qtr	70	1 359	966	710	185	96	—	..	3 386
Jan	71	1 403	937	717	204	99	—	..	3 431
Feb	72	1 322	958	715	165	97	—	..	3 329
Mar	67	1 352	1 004	699	185	92	—	..	3 399

	NSW	Vic.(d)	Qld(e)	SA(f)	WA(g)	Tas.	NT	ACT	Aust.(h)
REPARATION-COMMUNITY SERVICE (NUMBER ON FIRST DAY OF MONTH)									
2004	4 430	1 088	1 896	1 447	2 179	421	254	116	11 830
2005	4 751	911	1 862	1 265	2 184	472	226	90	11 759
2006	4 436	876	2 045	1 125	1 967	501	198	85	11 233
2006									
Mar Qtr	4 612	974	2 051	1 162	2 085	480	198	76	11 638
Jun Qtr	4 545	938	2 094	1 160	1 991	507	197	84	11 516
Sep Qtr	4 372	854	2 036	1 092	1 911	490	206	84	11 044
Dec Qtr	4 215	739	1 997	1 084	1 883	529	192	96	10 733
2007									
Mar Qtr	4 206	689	1 854	1 078	1 806	548	218	115	10 513
Jan	4 162	697	1 871	1 048	1 846	557	205	113	10 499
Feb	4 238	686	1 834	1 112	1 807	578	224	113	10 592
Mar	4 219	685	1 857	1 073	1 764	508	224	118	10 448

.. not applicable

— nil or rounded to zero (including null cells)

- (a) If a person has more than one type of order, they are counted against each order in this table. If a person has more than one order of the same order type, they are counted only once in the order type.
- (b) With the exception of Vic. and Tas., includes persons with breached or suspended orders.
- (c) Figures for the quarter and year for first day of the month counts are calculated as a simple average – see Explanatory Notes, paragraph 5.
- (d) As of 1 July 2005, the definition of an adult changed in Vic. to a person aged 18 years and over – see Explanatory Notes, paragraph 32.
- (e) From July 2006 restricted movement and parole orders may be affected by legislative changes – see Explanatory Notes, paragraph 35.
- (f) Data movements from the June quarter 2005 may be influenced by data entry delays – see Explanatory Notes, paragraph 37.
- (g) Prior to the September quarter 2004, counts of restricted movement included conditional bail orders. These are now included in bail orders – see Explanatory Notes, paragraph 38.
- (h) See footnotes d, e, f and g.

	NSW	Vic.(d)	Qld(e)	SA(f)	WA(g)	Tas.	NT	ACT	Aust.(h)
SUPERVISION (COMPLIANCE)–PAROLE (NUMBER ON FIRST DAY OF MONTH)									
2004	3 756	1 465	932	949	1 255	95	153	113	8 719
2005	4 155	1 576	908	920	1 332	91	140	141	9 262
2006	3 949	1 460	975	894	1 279	86	113	136	8 890
2006									
Mar Qtr	3 886	1 540	927	900	1 362	99	124	137	8 974
Jun Qtr	3 967	1 482	914	893	1 316	87	111	136	8 905
Sep Qtr	3 949	1 423	919	888	1 246	81	107	135	8 747
Dec Qtr	3 994	1 395	1 139	894	1 192	75	109	137	8 935
2007									
Mar Qtr	3 985	1 416	1 532	915	1 207	76	106	125	9 362
Jan	4 053	1 420	1 419	908	1 216	73	112	127	9 328
Feb	3 982	1 428	1 506	915	1 220	76	107	127	9 361
Mar	3 920	1 400	1 672	921	1 185	78	100	121	9 397

	NSW	Vic.(d)	Qld(e)	SA(f)	WA(g)	Tas.	NT	ACT	Aust.(h)
SUPERVISION (COMPLIANCE)–BAIL (NUMBER ON FIRST DAY OF MONTH)									
2004	275	571	154	..	5	179	1 184
2005	218	780	231	..	4	194	1 428
2006	214	888	243	..	4	174	1 523
2006									
Mar Qtr	203	849	234	..	5	155	1 446
Jun Qtr	215	857	266	..	4	165	1 507
Sep Qtr	214	904	248	..	4	177	1 546
Dec Qtr	222	943	224	..	4	199	1 592
2007									
Mar Qtr	226	1 012	250	..	7	199	1 694
Jan	237	972	243	..	6	206	1 664
Feb	233	1 029	247	..	9	200	1 718
Mar	209	1 034	260	..	6	192	1 701

	NSW	Vic.(d)	Qld(e)	SA(f)	WA(g)	Tas.	NT	ACT	Aust.(h)
SUPERVISION (COMPLIANCE)–SENTENCED PROBATION (NUMBER ON FIRST DAY OF MONTH)									
2004	10 285	4 233	7 553	2 491	3 396	516	608	815	29 897
2005	10 861	4 361	8 014	2 598	3 617	539	721	817	31 528
2006	10 923	4 294	8 855	2 631	3 556	642	837	784	32 523
2006									
Mar Qtr	10 644	4 330	8 678	2 571	3 654	631	792	763	32 062
Jun Qtr	11 010	4 221	8 856	2 608	3 513	623	818	777	32 427
Sep Qtr	11 075	4 190	8 870	2 651	3 534	654	861	805	32 640
Dec Qtr	10 961	4 436	9 018	2 695	3 525	660	878	792	32 965
2007									
Mar Qtr	11 044	4 152	8 710	2 698	3 537	672	870	792	32 475
Jan	10 914	4 241	8 782	2 703	3 537	675	878	796	32 526
Feb	11 072	4 133	8 683	2 672	3 515	678	872	799	32 424
Mar	11 145	4 082	8 665	2 719	3 559	663	860	781	32 474

.. not applicable

- (a) If a person has more than one type of order, they are counted against each order in this table. If a person has more than one order of the same order type, they are counted only once in the order type.
- (b) With the exception of Vic. and Tas., includes persons with breached or suspended orders.
- (c) Figures for the quarter and year for first day of the month counts are calculated as a simple average – see Explanatory Notes, paragraph 5.
- (d) As of 1 July 2005, the definition of an adult changed in Vic. to a person aged 18 years and over – see Explanatory Notes, paragraph 32.
- (e) From July 2006 restricted movement and parole orders may be affected by legislative changes – see Explanatory Notes, paragraph 35.
- (f) Data movements from the June quarter 2005 may be influenced by data entry delays – see Explanatory Notes, paragraph 37.
- (g) Prior to the September quarter 2004, counts of restricted movement included conditional bail orders. These are now included in bail orders – see Explanatory Notes, paragraph 38.
- (h) See footnotes d, e, f and g.

EXPLANATORY NOTES

INTRODUCTION

1 This publication presents statistical series on persons held in either adult corrective services custody or who are serving adult community-based orders in Australia. It contains data on the number of persons by their sex, Indigenous status, type of custody, legal status and sentence type; the number of sentenced persons received into corrective services custody each month; and the number of federal prisoners.

2 Statistics presented in this publication are compiled in three ways:

- Average daily prisoner population: Counts taken on each day of the month are summed and divided by the number of days in that month to determine the average daily prisoner population for that month. The average daily periodic detainee population is a count of persons on periodic detention on each day a centre is open, divided by the number of days a centre is open.
- Sentenced prisoner reception figures: Counts are provided each month on the number of receptions where a prisoner is received as a sentenced prisoner. This includes prisoners with a change of legal status from unsentenced to sentenced.
- First day of the month prisoner population: Counts of prisoner populations, taken on or near the first day of the month (see Explanatory Notes, paragraphs 4 and 5), and counts of persons serving community-based corrections orders.

3 Although national standards and classifications are used in the compilation of these statistics, some discrepancies remain between the states and territories. These are due to legislative and procedural differences between jurisdictions and the way that these differences are reflected in agencies' administrative data systems. As part of its quality assurance strategy, the ABS is working with corrective services agencies to minimise the effect of these differences.

REFERENCE PERIOD/DATE

4 The reference period for average daily prisoner population statistics and sentenced reception counts is the complete reference month. Prior to the December quarter 2004, average daily statistics for Australian Capital Territory prisoners held in New South Wales could not be supplied, and a single count taken on a specific day of the month was used instead. The reference date for all other figures is the first day of the reference month. However, not all states and territories report strictly according to this 'first day of the month' rule:

- The Western Australian, Victorian and Australian Capital Territory prisoners in New South Wales prisons populations are counted as at midnight on the last day of the month. In these cases the figures provided are taken to represent the prison population at the beginning of the following month to align with practices in other states and territories.
- Prior to the September quarter 2004, the New South Wales prison population was counted on the last Sunday of the month. The New South Wales community-based corrections population is counted on the first day of the month.

5 Calculation of figures for the entire quarter and entire year varies depending on the counting unit and method of counting prisoners:

- Average daily figures: Figures are calculated by weighting the average according to the number of days in each month or year.
- First day of the month: Figures are simple averages. For quarterly figures, the sum of the monthly data is divided by three; for yearly figures, the figures for each month are added and the total divided by twelve.
- Sentenced receptions: Figures are totals of each month.
- These figures may be subject to rounding.

SCOPE

6 The scope of the statistics in this publication includes all persons remanded or sentenced to adult custodial corrective services agencies (including Work Outreach Camps and Community Custody Centres in Queensland), or who are serving adult community-based orders in each state and territory in Australia.

EXPLANATORY NOTES *continued*

SCOPE *continued*

7 Counts of prisoners in the following custodial facilities are included in the collection:

- gazetted prisons in all jurisdictions
- periodic detention centres in New South Wales and the Australian Capital Territory
- community custody centres and work outreach camps in Queensland
- cells in court complexes administered by corrective services in New South Wales
- transitional centres in New South Wales
- lock-ups in Western Australia operated by the police but designated as a prison by the Chief Executive Officer of Corrective Services.

8 The prisons and community corrections collection excludes the following custodial facilities:

- police lockups, police prisons and cells in court complexes not administered and controlled by corrective services
- gazetted police prisons in the Northern Territory
- juvenile detention centres, including those under the authority of adult corrective services
- immigration detention centres
- military prisons.

9 This collection includes counts of persons remanded or sentenced to adult custody facilities, or directed to serve community based orders administered by adult corrective services agencies. In all states and territories except Queensland, persons are considered adults if aged 18 years and over. In Queensland persons are considered adults if aged 17 years and over. The vast majority of persons counted in the collection are adults. However, juveniles may be included in exceptional circumstances.

10 Since December 2004, the Kariiong Juvenile Correctional Centre in New South Wales has operated under the authority of adult corrective services. The population at Kariiong Juvenile Correctional Centre may include adult persons as well as juveniles. New South Wales includes juveniles based in Kariiong in this collection, however, this facility accounts for less than 0.5% of the New South Wales prisoner population.

11 Federal prisoners include those persons charged and sentenced under a Commonwealth statute, and those persons who are charged and sentenced under the laws of another country but transferred to an Australian prison to serve their sentence under the *International Transfer of Prisoners Act 1997* (Cwlth). To give practical effect to this legislation in Australia, the framework was introduced in January 2003. For the purposes of this publication, federal sentenced prisoners are those persons who are recognised by the Criminal Law Division of the Australian Government Attorney-General's Department as having been charged and sentenced under a Commonwealth statute, or transferred from another country to serve their sentence in Australia.

12 With the exception of Victoria and Tasmania, community-based corrections includes those persons with breached or suspended orders.

DATA SOURCE

13 Statistics in this publication are derived from information provided to the ABS from administrative records held by corrective services agencies within each state and territory. Statistics on federal prisoners are derived from records kept by the Criminal Law Division of the Australian Government Attorney-General's Department.

COUNTING RULES

14 Statistics for persons held in custody are presented by the state or territory in which they were held and therefore may not be the sentencing jurisdiction. The only exception to this are data for federal sentenced prisoners. These are presented by the state or territory in which they were sentenced, not where they were held in custody.

EXPLANATORY NOTES *continued*

COUNTING RULES *continued*

15 Sentenced prisoners who have other offences that are unsentenced are counted as sentenced. Prisoners may be unsentenced because they are awaiting the outcome of their trial, convicted but awaiting sentence, or awaiting deportation.

16 If an offender has two or more different types of community-based orders operating simultaneously, then each order will be counted. If two or more community-based orders are of the same type, these orders together will only be counted as one order.

INDIGENOUS IDENTIFICATION

17 In all states and territories persons are asked during entry into custody whether they are of Aboriginal or Torres Strait Islander origin. In states other than Victoria, it is uncommon for corrective services agencies to collect Indigenous status information from sources other than the person's own identification. In Victoria, Indigenous status data can also be accessed from data collected from other justice sources.

18 Some persons in custody are recorded with an unknown Indigenous status on the information systems of corrective services agencies as their status has not been able to be obtained. Persons with Indigenous status unknown are excluded from tables 6, 7, 12 and 13. Counts of persons with an unknown Indigenous status are included in all other tables. Unknowns account for just over 1% of all records.

AUSTRALIAN CAPITAL TERRITORY PRISONERS

19 Persons sentenced to full-time custody by the Australian Capital Territory are usually held in New South Wales prisons. The Australian Capital Territory has two remand centres for unsentenced prisoners and a periodic detention centre. During 2000 the Australian Capital Territory commenced detaining prisoners sentenced for fine default only at their remand centres. Unsented Australian Capital Territory prisoners may also be detained in New South Wales prisons.

20 To provide greater understanding of the number of prisoners attributed to the Australian Capital Territory, while presenting an accurate picture of the New South Wales prisoner population, statistics relating to Australian Capital Territory prisoners in New South Wales prisons are presented as a subset of the New South Wales figures.

21 Imprisonment rate data for the Australian Capital Territory are included in the publication and are calculated on the basis of the total number of Australian Capital Territory prisoners (i.e. Australian Capital Territory prisoners held in New South Wales prisons, and Australian Capital Territory prisoners held in the Australian Capital Territory) divided by the estimated resident Australian Capital Territory adult population and multiplied by 100,000. For New South Wales, the imprisonment rate is based on the count of New South Wales prisoners, excluding Australian Capital Territory prisoners held in New South Wales prisons, divided by the estimated resident New South Wales adult population and multiplied by 100,000. Time series data have also been derived on this basis.

RATES

22 Imprisonment and community-based corrections rates enable comparisons of prisoner numbers to be made across states and territories. Prisoner and community-based corrections rates are expressed per 100,000 adult population. Imprisonment rates are calculated based on two different counting concepts (average daily and first day of the month), as a result there may be variations in imprisonment rates presented in this publication.

23 In this publication the population figures used in the calculation of rates are for persons aged 18 years and over for all states and territories except Queensland where the population is persons aged 17 years and over (see Explanatory Notes, paragraph 9).

24 Rates for the total adult prisoner population and persons in community-based corrections are calculated using the estimated resident population (ERP) for each of the states and territories (refer *Australian Demographic Statistics* (cat. no. 3101.0)). All estimates for the Australian Capital Territory exclude Jervis Bay Territory. All estimates

EXPLANATORY NOTES *continued*

RATES *continued*

for Australia exclude the external territories of Christmas Island and the Cocos (Keeling) Island. As the population changes over time the denominator used for the calculation of rates varies, depending on the reference period. The most current ERP data available at the time of publication are used to calculate rates as follows:

- for the March quarter, ERP is from the previous September quarter;
- for the June quarter, ERP is from the previous December quarter;
- for the September quarter, ERP is from the previous March quarter;
- for the December quarter, ERP is from the previous June quarter; and
- annual rates are an average of the rates of the contributing quarters.

Indigenous imprisonment rates

25 Rates for the Indigenous adult population in this publication are based on the low series projections for 30 June of the current calendar year (refer to *Experimental Estimates and Projections, Aboriginal and Torres Strait Islander Australians, 30 June 1991 to 30 June 2009* (cat. no. 3238.0)). These projections are based on the 2001 Census of Population and Housing.

26 The low series are one of two series of these projections that have been published for the years 2002 to 2009.

- The low series assumes no 'unexplained growth' – that is, the Indigenous population recorded in the 2001 Census of Population and Housing is projected to change only as a result of births and deaths (natural increase) and, for the states and territories, as a result of interstate migration.
- The high series assumes that there will be 'unexplained growth' in the Indigenous population – that is, the Indigenous population is projected to change as a result of an unexplained component in addition to the effects of natural increase and interstate migration. The size of the unexplained component is based on the 'unexplained growth' observed between the 1996 and 2001 censuses.

27 The decision to use the low series as the denominator in the calculation of Indigenous imprisonment rates from 2002 followed consultation with the National Corrective Services Statistics Unit Advisory Group and other stakeholders.

Revisions to historical Indigenous rates

28 Historical rates for Indigenous prisoners have been revised using Indigenous population projections based on the 2001 Census of Population and Housing (low series) for 2003 to 2004.

SIGNIFICANT EVENTS

New South Wales

29 The administrative classification of the following NSW correctional facilities was altered at 1 July 2005: Cooma, Dilwynia, Parramatta and Berrima. These facilities changed classification from 'open' to 'secure' to reflect alterations in the profile of inmates held, and the operational requirements of those centres. As such, the proportion of persons in secure and open custody altered in the September quarter 2005 compared to previous quarters.

30 From January 2004, New South Wales custodial data revised to include prisoners in court cells administered by corrective services and transitional centres.

Victoria

31 In December 2004 Victoria's Beechworth Prison closed while a new correctional facility (Beechworth Correctional Centre) opened in February 2005. The old Beechworth Prison was classified as medium security and the new Correctional Centre is classified as minimum security. Data previously published for secure custody were overcounted and open custody were undercounted. Data for the March and June quarters 2005 have been revised to reflect this change.

32 On 1 July 2005 the Children and Young Persons (Age Jurisdiction) Act 2004 came into force in Victoria. This Act changed the definition of a child from a person under 17 years of age to a person under 18 years of age. As a consequence the definition of an adult also changed for corrective services data to a person aged 18 years and over.

EXPLANATORY NOTES *continued*

Victoria continued

Imprisonment rates for the September and December quarters 2005, and March quarter 2006 have been revised as a consequence. Data prior to 1 July 2005 includes persons aged 17 years.

33 In March 2006 Victoria opened Marngoneet Correctional Centre, Lara. The focus of this facility is to provide intensive treatment and offender management programs for males who have a minimum of six months of their sentence left to serve when they arrive there. The new Metropolitan Remand Centre at Ravenhall was opened in April 2006. The facility provides increased capacity to hold prisoners awaiting trial or sentencing.

34 In early 2006, Victoria implemented a strategy to reduce the number of persons serving a community-based order for fine default. This has resulted in a decrease in the number of persons with fine option community-based orders from the June quarter 2006.

Queensland

35 The *Corrective Services Act 2006* came into effect in Queensland on 1 July 2006. As a result home detention community-based correction orders will no longer be a sentencing option. Under this Act, prisoners will serve their sentence either in custody or on parole in the community. Under these changes, a sentencing court must specify a parole release date for persons sentenced after 28 August 2006 to a term of imprisonment of 3 years or less (with the exception of sex offenders and serious violent offenders).

36 In September 2005 Queensland implemented a new offender management system - the Integrated Offender Management System (IOMS). As a result data for the September quarter 2005, December quarter 2005, and March quarter 2006 were revised in June quarter 2006.

South Australia

37 Data extracted from the South Australian information system from the June quarter 2005 may be subject to data processing time lags.

Western Australia

38 A range of amendments to Western Australian corrections legislation came into effect in 2003 and 2004. Prior to the September quarter 2004, counts of restricted movement orders included conditional bail orders (that may have a restricted movement condition). All conditional bail orders are now counted as bail orders.

39 In the June quarter 2005, Western Australia implemented a strategy to reduce the number of fine defaulters being taken into custody by offering alternative means of payment. This has resulted in a decrease in the number of sentenced receptions into custody for the September quarter 2005.

Tasmania

40 The new Risdon Prison Complex in Tasmania was opened on 28 August 2006. This complex includes the Mary Hutchison Women's Prison which was opened in May 2006. A new men's maximum/medium security facility was also built within the complex.

Australian Capital Territory

41 From 1 July 2005, Australian Capital Territory periodic detainees who were in breach of an order for more than three months were excluded from counts. Consequently, the periodic detainee population decreased.

RELATED PUBLICATIONS

ABS Publications

42 Other ABS publications that may be of interest include:
Australian Demographic Statistics (cat. no. 3101.0) – issued quarterly
Australian Social Trends (cat. no. 4102.0) – issued annually
Australian Standard Offence Classification (cat. no.1234.0) – irregular
Crime and Safety, Australia (cat. no. 4509.0) – released 26 April 2006
Criminal Courts, Australia (cat. no. 4513.0) – issued annually
Experimental Estimates and Projections, Aboriginal and Torres Strait Islander Australians, 30 June 1991 to 30 June 2009 (cat. no. 3280.0)

EXPLANATORY NOTES *continued*

ABS Publications *continued*

General Social Survey: Summary Results, Australia (cat. no. 4159.0) – irregular
*Information Paper: Measuring Crime Victimization, Australia: The Impact of
Different Collection Methodologies* (cat. no. 4522.0.55.001) – single issue
*Information paper: National Information Development Plan for Crime and Justice
Statistics 2005* (cat. no. 4520.0) – single issue
Measures of Australia's Progress (cat. no. 1370.0) – issued annually
Personal Safety Survey (cat. no. 4906.0) – released 10 August 2006
Prisoners in Australia (cat. no. 4517.0) – issued annually
Recorded Crime – Victims, Australia (cat. no. 4510.0) – issued annually
Sexual Assault in Australia: A Statistical Overview (cat. no. 4523.0) – single issue
Year Book Australia (cat. no. 1301.0) – issued annually

43 Current publications and other products released by the ABS are listed in the *Catalogue of Publications and Products* (cat. no. 1101.0). The Catalogue is available from the ABS website <<http://www.abs.gov.au>>. The ABS also issues a daily Release Advice on the website that details products to be released in the week ahead. The National Centre for Crime and Justice Statistics releases a biannual newsletter that is published on the ABS website. The Centre can be contacted by email through <crime.justice@abs.gov.au>.

Non-ABS Publications

44 Non-ABS sources that may be of interest include:
Australian Institute of Criminology, *List of Publications* – irregular
<<http://www.aic.gov.au>>
Crime Research Centre, University of Western Australia, *Crime and Justice Statistics
for Western Australia* – issued annually
<<http://www.crc.law.uwa.edu.au>>
Department of Corrective Services, New South Wales, *NSW Inmate Census* –
irregular
<<http://www.dcs.nsw.gov.au>>
Department of Justice, Northern Territory, *Northern Territory Quarterly Crime and
Justice Statistics* – issued quarterly
<<http://www.nt.gov.au/justice/>>
Department of Justice, Victoria, *Statistical Profile of the Victorian Prison System*
– issued annually
<<http://www.justice.vic.gov.au>>
NSW Bureau of Crime Statistics and Research, *New South Wales Criminal Courts
Statistics* – issued annually
<<http://www.lawlink.nsw.gov.au>>
Office of Crime Statistics and Research, South Australia, *Crime and Justice in South
Australia* – issued annually
<<http://www.ocsar.sa.gov.au>>
Steering Committee for the Review of Commonwealth/State Service Provision,
Report on Government Services – issued annually
<<http://www.pc.gov.au/publications/index.html>>

APPENDIX EXPERIMENTAL COMMUNITY-BASED CORRECTIONS DATA

INTRODUCTION

This appendix presents experimental data for Indigenous persons in community-based corrections. Data are presented as the number of Indigenous persons on community-based corrections orders on the first day of the month.

Corrective Services agencies have undertaken significant work to improve the quality of Indigenous data over the last 12 months, hence data can now be published on an experimental basis.

APPENDIX EXPERIMENTAL COMMUNITY-BASED CORRECTIONS DATA

continued

A1 PERSONS IN COMMUNITY-BASED CORRECTIONS, By Indigenous status(a)(b)

	NSW	Vic.(c)	Qld	SA(d)	WA	Tas.	NT	ACT	Aust.(c)
INDIGENOUS (NUMBER ON FIRST DAY OF MONTH)									
2005	2 842	378	2 054	714	1 638	111	777	100	8 613
2006	2 908	324	2 146	746	1 777	141	846	81	8 969
2006									
Mar Qtr	2 805	354	2 146	704	1 790	138	807	79	8 824
Jun Qtr	2 864	308	2 193	709	1 806	145	839	75	8 939
Sep Qtr	2 908	319	2 112	785	1 792	147	866	82	9 010
Dec Qtr	3 054	314	2 134	786	1 722	134	872	86	9 101
2007									
Mar Qtr	3 103	312	2 132	791	1 685	140	896	93	9 154
Jan	3 089	326	2 110	789	1 698	139	891	95	9 137
Feb	3 106	300	2 118	793	1 679	142	904	91	9 133
Mar	3 114	311	2 169	792	1 679	139	893	94	9 191
NON-INDIGENOUS (NUMBER ON FIRST DAY OF MONTH)									
2005	14 062	7 143	9 227	4 588	3 907	756	330	806	40 817
2006	13 835	6 675	9 978	4 793	3 613	946	307	876	41 024
2006									
Mar Qtr	13 732	7 197	9 901	4 761	3 761	914	316	769	41 352
Jun Qtr	13 977	6 733	10 015	4 797	3 619	955	293	862	41 251
Sep Qtr	13 927	6 368	9 941	4 794	3 563	958	309	914	40 774
Dec Qtr	13 704	6 404	10 056	4 819	3 511	958	309	959	40 720
2007									
Mar Qtr	13 701	6 531	9 833	4 789	3 557	989	297	939	40 636
Jan	13 638	6 627	9 808	4 770	3 563	993	305	959	40 663
Feb	13 731	6 516	9 770	4 814	3 551	1 009	300	939	40 630
Mar	13 733	6 449	9 922	4 783	3 558	966	285	918	40 614
UNKNOWN (NUMBER ON FIRST DAY OF MONTH)									
2005	1 296	864	386	370	8	200	4	223	3 351
2006	1 101	602	—	58	4	97	2	125	1 988
2006									
Mar Qtr	1 101	727	—	49	9	106	6	199	2 197
Jun Qtr	1 170	578	—	76	2	73	—	122	2 022
Sep Qtr	1 107	507	—	56	2	83	—	111	1 865
Dec Qtr	1 025	595	—	52	3	124	2	69	1 869
2007									
Mar Qtr	1 057	606	—	54	2	107	3	62	1 891
Jan	1 027	630	—	49	—	113	3	58	1 880
Feb	1 079	593	—	52	3	116	3	62	1 908
Mar	1 064	594	—	62	4	92	3	66	1 885

— nil or rounded to zero (including null cells)

(a) With the exception of Vic. and Tas., includes persons with breached or suspended orders.

(b) Figures for the quarter and year for first day of the month counts are calculated as a simple average – see Explanatory Notes, paragraph 5.

(c) As of 1 July 2005, the definition of an adult changed in Vic. to a person aged 18 years and over – see Explanatory Notes, paragraph 32.

(d) Data movements from June quarter 2005 may be influenced by data entry delays – see Explanatory Notes, paragraph 37.

APPENDIX EXPERIMENTAL COMMUNITY-BASED CORRECTIONS DATA
continued

A1 PERSONS IN COMMUNITY-BASED CORRECTIONS, By Indigenous status(a)(b) *continued*

	NSW	Vic.(c)	Qld	SA(d)	WA	Tas.	NT	ACT	Aust.(c)
PERSONS (NUMBER ON FIRST DAY OF MONTH)									
2005	18 200	8 384	11 667	5 672	5 553	1 067	1 110	1 128	52 782
2006	17 843	7 601	12 124	5 597	5 395	1 184	1 155	1 082	51 981
2006									
Mar Qtr	17 638	8 277	12 047	5 514	5 560	1 159	1 130	1 047	52 372
Jun Qtr	18 011	7 620	12 208	5 582	5 427	1 173	1 132	1 059	52 212
Sep Qtr	17 941	7 193	12 053	5 635	5 357	1 187	1 176	1 107	51 649
Dec Qtr	17 783	7 313	12 190	5 657	5 236	1 216	1 182	1 114	51 690
2007									
Mar Qtr	17 860	7 449	11 966	5 635	5 245	1 236	1 196	1 094	51 680
Jan	17 754	7 583	11 918	5 608	5 261	1 245	1 199	1 112	51 680
Feb	17 916	7 409	11 888	5 659	5 233	1 267	1 207	1 092	51 671
Mar	17 911	7 354	12 091	5 637	5 241	1 197	1 181	1 078	51 690

- (a) With the exception of Vic. and Tas., includes persons with breached or suspended orders.
- (b) Figures for the quarter and year for first day of the month counts are calculated as a simple average – see Explanatory Notes, paragraph 5.
- (c) As of 1 July 2005, the definition of an adult changed in Vic. to a person aged 18 years and over – see Explanatory Notes, paragraph 32.
- (d) Data movements from June quarter 2005 may be influenced by data entry delays – see Explanatory Notes, paragraph 37.

APPENDIX EXPERIMENTAL COMMUNITY-BASED CORRECTIONS DATA
continued

A2 PROPORTION OF PERSONS IN COMMUNITY-BASED CORRECTIONS, By Indigenous status(a)(b)

	NSW	Vic. (c)	Qld	SA(d)	WA	Tas.	NT	ACT	Aust. (c)
INDIGENOUS (%)									
2005	15.6	4.5	17.6	12.6	29.5	10.4	69.9	8.8	16.3
2006	16.3	4.3	17.7	13.3	32.9	11.9	73.3	7.4	17.3
2006									
Mar Qtr	15.9	4.3	17.8	12.8	32.2	11.9	71.4	7.5	16.8
Jun Qtr	15.9	4.0	18.0	12.7	33.3	12.3	74.1	7.1	17.1
Sep Qtr	16.2	4.4	17.5	13.9	33.4	12.4	73.7	7.4	17.4
Dec Qtr	17.2	4.3	17.5	13.9	32.9	11.0	73.7	7.7	17.6
2007									
Mar Qtr	17.4	4.2	17.8	14.0	32.1	11.3	74.9	8.5	17.7
Jan	17.4	4.3	17.7	14.1	32.3	11.2	74.3	8.5	17.7
Feb	17.3	4.0	17.8	14.0	32.1	11.2	74.9	8.3	17.7
Mar	17.4	4.2	17.9	14.1	32.0	11.6	75.6	8.7	17.8
NON-INDIGENOUS (%)									
2005	77.3	85.2	79.1	80.9	70.4	70.8	29.7	71.4	77.3
2006	77.5	87.8	82.3	85.6	67.0	79.9	26.6	81.0	78.9
2006									
Mar Qtr	77.9	86.9	82.2	86.3	67.6	78.9	28.0	73.5	79.0
Jun Qtr	77.6	88.4	82.0	85.9	66.7	81.4	25.9	81.4	79.0
Sep Qtr	77.6	88.5	82.5	85.1	66.5	80.7	26.3	82.6	78.9
Dec Qtr	77.1	87.6	82.5	85.2	67.0	78.8	26.1	86.1	78.8
2007									
Mar Qtr	76.7	87.7	82.2	85.0	67.8	80.0	24.8	85.8	78.6
Jan	76.8	87.4	82.3	85.1	67.7	79.8	25.4	86.2	78.7
Feb	76.6	87.9	82.2	85.1	67.9	79.6	24.9	86.0	78.6
Mar	76.7	87.7	82.1	84.9	67.9	80.7	24.1	85.2	78.6
UNKNOWN (%)									
2005	7.1	10.3	3.3	6.5	0.1	18.7	0.4	19.7	6.3
2006	6.2	7.9	—	1.0	0.1	8.2	0.2	11.6	3.8
2006									
Mar Qtr	6.2	8.8	—	0.9	0.2	9.2	0.6	19.0	4.2
Jun Qtr	6.5	7.6	—	1.4	—	6.2	—	11.5	3.9
Sep Qtr	6.2	7.0	—	1.0	—	7.0	—	10.0	3.6
Dec Qtr	5.8	8.1	—	0.9	0.1	10.2	0.1	6.2	3.6
2007									
Mar Qtr	5.9	8.1	—	1.0	—	8.7	0.3	5.7	3.7
Jan	5.8	8.3	—	0.9	—	9.1	0.3	5.2	3.6
Feb	6.0	8.0	—	0.9	0.1	9.2	0.2	5.7	3.7
Mar	5.9	8.1	—	1.1	0.1	7.7	0.3	6.1	3.6

— nil or rounded to zero (including null cells)

(a) With the exception of Vic. and Tas., includes persons with breached or suspended orders.

(b) Figures for the quarter and year for first day of the month counts are calculated as a simple average – see Explanatory Notes, paragraph 5.

(c) As of 1 July 2005, the definition of an adult changed in Vic. to a person aged 18 years and over – see Explanatory Notes, paragraph 32.

(d) Data movements from June quarter 2005 may be influenced by data entry delays – see Explanatory Notes, paragraph 37.

GLOSSARY

Bail	This is generally a pre-sentence option where a person is released into the community for a period before they appear in court for trial or final sentencing. Bail orders can require a financial surety to be lodged with the court, and a number of conditions including supervision and residential requirements designed to ensure the re-appearance of the person at court. Bail counts are available only in states and territories where bail orders are supervised by corrective services. Bail is a sub-category of Supervision where the person is under the supervision of corrective services (<i>see</i> Supervision).
Community-based corrections	This refers to the community-based management of court-ordered sanctions, post-prison administrative arrangements and fine conversions, which principally involve the provision of one or more of the following activities: supervision, programs or community work.
Community service	This category of community-based corrections orders includes sentencing options requiring offenders to undertake a specified number of hours of unpaid, supervised work to benefit the community on an approved project. Community service is a sub-category of Reparation (<i>see</i> Reparation).
Corrective services custody	Confinement in a place intended primarily for the purpose of confining prisoners, such as a prison, prison farm, Periodic Detention Centre or Community Custody Centre.
Federal sentenced prisoner	Persons charged and sentenced under a Commonwealth statute or transferred from another country to serve their sentence in Australia.
Fine option	A community-based sentence type where the offender is serving a sentence for default of a fine. In most jurisdictions this order type requires an offender to complete community service as a reparatory act. Fine option is a sub-category of Reparation (<i>see</i> Reparation).
Full-time prison custody	A type of custody where a prisoner is required to be held in custody on a full-time basis. This includes prisons, Queensland Community Custody Centres and work outreach camps. Full-time prison custody excludes periodic detention (<i>see</i> Periodic detention).
Home detention	(<i>see</i> Restricted movement)
Indigenous prisoner	A prisoner who identifies as being of Aboriginal or Torres Strait Islander origin, or both.
Legal status	A person may be either sentenced or unsentenced depending on the warrant(s) or court order(s) that provide the legal basis for the administration of the person through the criminal justice system.
Open custody	Refers to prisoners housed in minimum security custodial facilities that do not require them to be confined by a secure perimeter physical barrier, irrespective of whether a physical barrier exists.
Parole	A parole order is made following a period of imprisonment and requires an offender to be subject to supervision in the community. Additional conditions may also be applied such as programs, counselling or drug testing. Parole is a sub-category of Supervision (<i>see</i> Supervision).
Periodic detention	A type of custody or order where a sentenced prisoner is required to be held in custody on a part-time basis. Currently this consists of two consecutive days in a one-week period, while remaining at liberty during the rest of the week.
Prisoner	A person held in custody. For the purposes of this collection, prisoners are those whose confinement is the responsibility of a corrective services agency.
Remand	(<i>see</i> Unsentenced)
Reparation	Reparation refers to all offenders with an order that requires them to undertake unpaid, justice agency-approved community service work.

GLOSSARY *continued*

Restricted movement	This refers to persons who are subject to a system of restricted movement, including supervision and/or electronic monitoring. This category includes home detention that may restrict residence to a nominated place. Restricted movement can be either a pre-sentence or post-sentence order.
Secure custody	Refers to prisoners housed in medium or maximum security custodial facilities requiring them to be confined by a secure physical barrier.
Sentenced	A legal status indicating that a person has received a custodial or community-based order from a court in response to a conviction for an offence.
Sentenced prisoner reception	Refers to entry into corrective services custody from the community, having received a sentence of imprisonment as an outcome of a court proceeding; or persons who are sentenced to custody while in custody on remand (i.e. changed status from a remand to a sentenced prisoner); or persons entering custody as a result of defaulting on the payment of a fine. Sentenced prisoners in custody who receive a further sentence of imprisonment are not counted as sentenced receptions.
Sentenced probation	A supervision order made following an original sentence handed down in court following conviction. A probation order generally requires 'good behaviour' and compliance with the directions of supervisors. The order may also require compliance with conditions such as program attendance and residential requirements.
Supervision (compliance)	This includes community-based orders other than those categorised as restricted movement or reparation (e.g. parole, bail and sentenced probation).
Unsentenced	A legal status indicating that a person is confined to custody or supervision while awaiting the outcome of their trial.

FOR MORE INFORMATION . . .

INTERNET **www.abs.gov.au** the ABS web site is the best place for data from our publications and information about the ABS.

LIBRARY A range of ABS publications are available from public and tertiary libraries Australia wide. Contact your nearest library to determine whether it has the ABS statistics you require, or visit our web site for a list of libraries.

INFORMATION AND REFERRAL SERVICE

Our consultants can help you access the full range of information published by the ABS that is available free of charge from our web site, or purchase a hard copy publication. Information tailored to your needs can also be requested as a 'user pays' service. Specialists are on hand to help you with analytical or methodological advice.

PHONE 1300 135 070

EMAIL client.services@abs.gov.au

FAX 1300 135 211

POST Client Services, ABS, GPO Box 796, Sydney NSW 2001

FREE ACCESS TO STATISTICS

All statistics on the ABS web site can be downloaded free of charge.

WEB ADDRESS www.abs.gov.au



2451200003076

ISSN 1440 5997

RRP \$27.00